

RESOLUTION NO. 04-27

A RESOLUTION OF THE MAYOR AND COUNCIL OF THE CITY OF MARICOPA, ARIZONA, ACCEPTING PUBLIC IMPROVEMENTS AND MAINTENANCE RESPONSIBILITY FOR RANCHO EL DORADO PARKWAY, AT RANCHO EL DORADO PHASE IIB

WHEREAS, the City has received a request from the owner/developer to accept public improvements and maintenance responsibility for that portion of Rancho El Dorado Parkway, at Rancho El Dorado Phase IIB, as indicated on the map attached as Exhibit "A" hereto; and

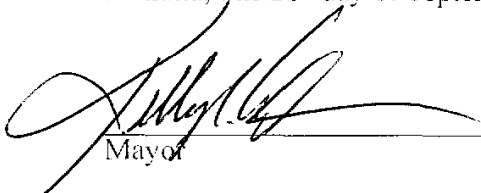
WHEREAS, it appears that the public improvement in question has been properly dedicated for public use; and

WHEREAS, the Maricopa Public Works Department has inspected the public improvements and has notified the Maricopa City Council that the public improvements have been installed to the satisfaction of the Maricopa Public Works Department; and

WHEREAS, it appears to the Maricopa City Council that the current owner has paid to the City the appropriate Subdivision Street Maintenance Fee, as established by Resolution 04-16, and any other applicable fees relating to the property;

NOW, THEREFORE, BE IT RESOLVED that the Maricopa City Council hereby accepts that portion of Rancho El Dorado Parkway, at Rancho El Dorado Phase IIB, as indicated on the map attached as Exhibit "A" hereto, into the City road system for purposes of public use, ownership and future maintenance. This Resolution shall be in full force and effect from and after its passage.

PASSED AND ADOPTED BY THE Mayor and Council of the City of Maricopa, Arizona, this 21st day of September, 2004.



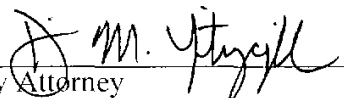
Mayor

ATTEST:



City Clerk

APPROVED AS TO FORM:



City Attorney

EXHIBIT "A"

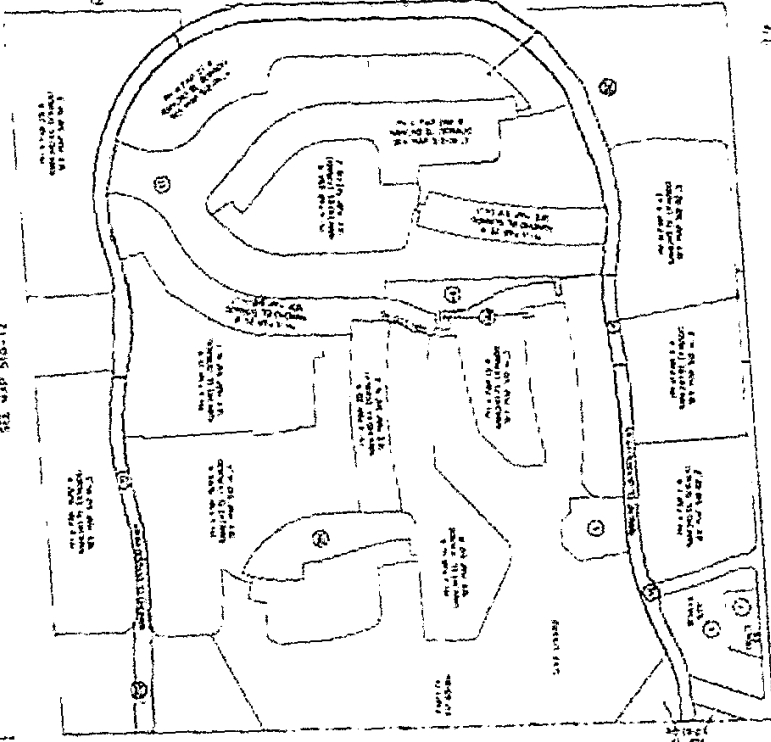
512-02.1

SEC. 14, T.4S R.63E

SEE MAP 510-13
SEE MAP 510-12
SEE MAP 510-11
SEE MAP 510-10
SEE MAP 510-9
SEE MAP 510-8
SEE MAP 510-7
SEE MAP 510-6
SEE MAP 510-5
SEE MAP 510-4
SEE MAP 510-3
SEE MAP 510-2
SEE MAP 510-1

RANCHO EL BIKRABI
P.A.D.

COBATE SUBDIZ



SEE MAP 510-13



SCALE 1" = 100'

11-28-1981

SEE MAP 510-13

SEE MAP 510-12

VICINITY MAP
SEE MAP 510-13

