

**RESOLUTION NO. 04-29**

**A RESOLUTION OF THE MAYOR AND COUNCIL OF THE CITY OF MARICOPA, ARIZONA, ACCEPTING PUBLIC IMPROVEMENTS AND MAINTENANCE RESPONSIBILITY FOR ALL STREETS WITHIN PARCEL NO. 14 OF THE VILLAGES AT RANCHO EL DORADO**

**WHEREAS**, the City has received a request from the owner/developer to accept public improvements and maintenance responsibility for all Streets within Parcel No. 14 of the Villages at Rancho El Dorado, as indicated on the map attached as Exhibit "A" hereto; and

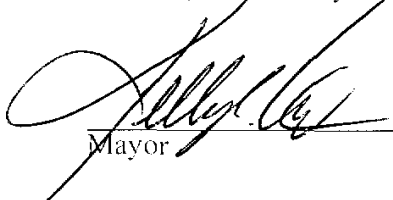
**WHEREAS**, it appears that the public improvements in question have been properly dedicated for public use; and

**WHEREAS**, the Maricopa Public Works Department has inspected the public improvements and has notified the Maricopa City Council that the public improvements have been installed to the satisfaction of the Maricopa Public Works Department; and


**WHEREAS**, it appears to the Maricopa City Council that the current owner has paid to the City the appropriate Subdivision Street Maintenance Fee, as established by Resolution 04-16, and any other applicable fees relating to the property;

**NOW, THEREFORE, BE IT RESOLVED** that the Maricopa City Council hereby accepts all Streets within Parcel No. 14 of the Villages at Rancho El Dorado, as indicated on the map attached as Exhibit "A" hereto, into the City road system for purposes of public use, ownership and future maintenance. This Resolution shall be in full force and effect from and after its passage.

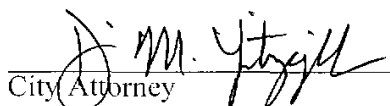
PASSED AND ADOPTED BY THE Mayor and Council of the City of Maricopa, Arizona, this 21<sup>st</sup> day of September, 2004.

  
\_\_\_\_\_  
Mayor

ATTEST:

  
\_\_\_\_\_  
City Clerk

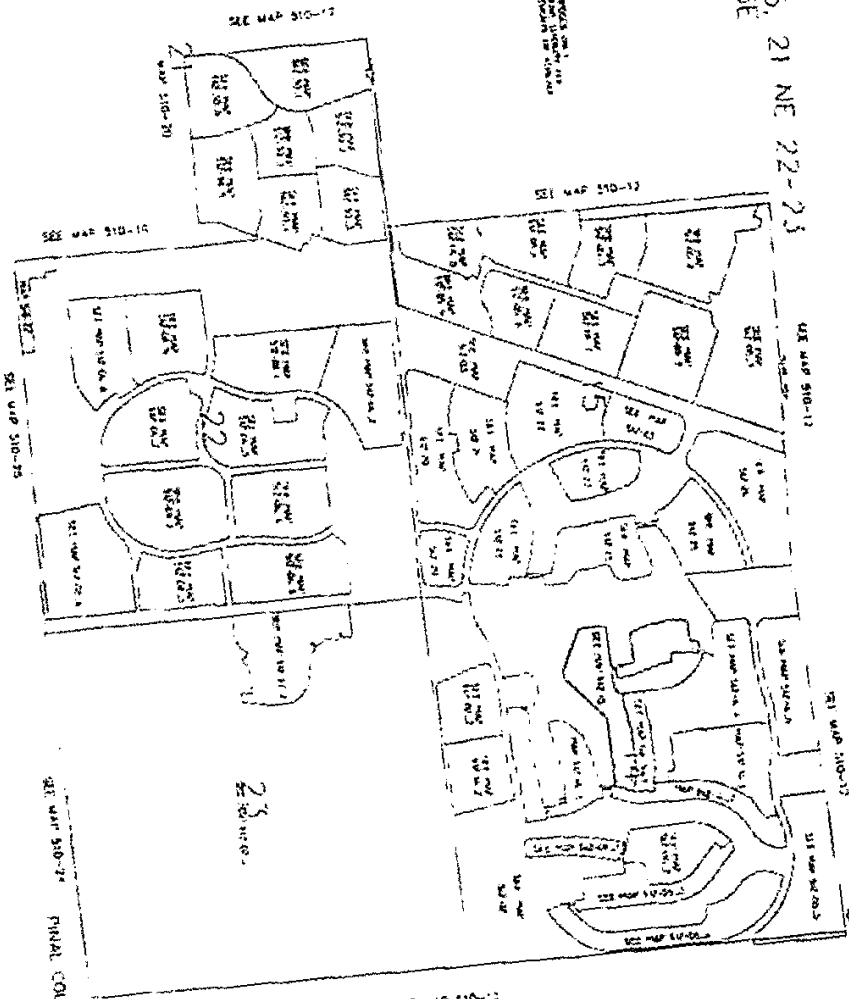
APPROVED AS TO FORM:

  
\_\_\_\_\_  
City Attorney

***EXHIBIT "A"***

SFR 14-15, 21 NE 22-23  
T14S R03E

SEE MAP 5 FOR THE APPROXIMATE LOCATION OF THE PROPERTY AND THE ADJACENT PROPERTY.



512--INDEX

N81 TO S2411  
01-16-2013

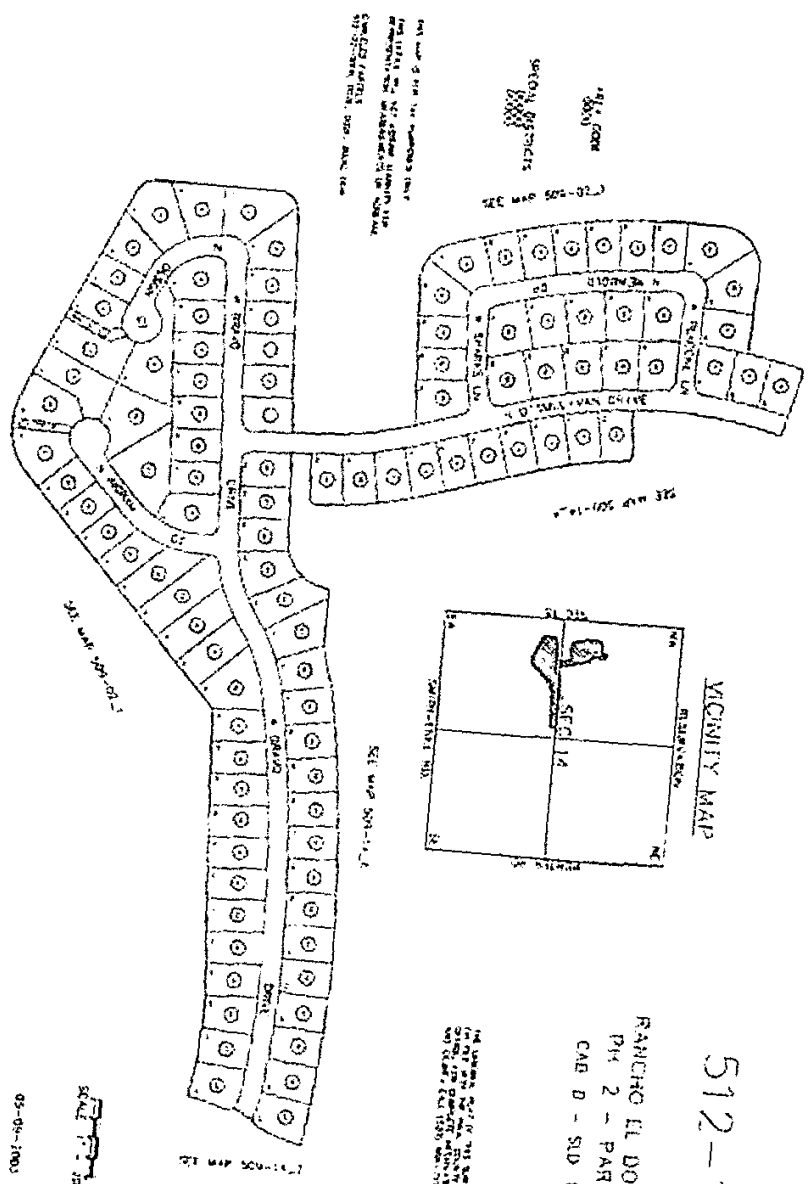
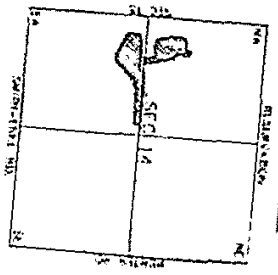
SEE MAP 510-24 FINAL COUNTY ASSESSORS MAP

SEC 14 T14S R6.3E

512-15

RANCHO EL DORADO  
PH. 2 - PAR 1/2  
CAB D - S/D 137

ALL RIGHTS RESERVED BY THE ASSASSORS  
NO WARRANTY IS MADE AS TO THE ACCURACY OF THE INFORMATION  
CONTAINED HEREIN. THE ASSASSORS SHALL NOT BE LIABLE FOR ANY  
DAMAGES, INCLUDING REASONABLE ATTORNEY'S FEES, ARISING OUT OF  
THE USE OF THIS MAP.



1/4 AC. LOT  
3000  
SECTION 14  
T14S R6.3E

SEE MAP 501-14-1  
SEE MAP 501-14-2  
SEE MAP 501-14-3  
SEE MAP 501-14-4  
SEE MAP 501-14-5  
SEE MAP 501-14-6  
SEE MAP 501-14-7  
SEE MAP 501-14-8  
SEE MAP 501-14-9  
SEE MAP 501-14-10  
SEE MAP 501-14-11  
SEE MAP 501-14-12  
SEE MAP 501-14-13  
SEE MAP 501-14-14  
SEE MAP 501-14-15  
SEE MAP 501-14-16  
SEE MAP 501-14-17  
SEE MAP 501-14-18  
SEE MAP 501-14-19  
SEE MAP 501-14-20



05-05-1903  
PINAL COUNTY ASSESSORS MAP