

RESOLUTION NO. 05-15

A RESOLUTION OF THE MAYOR AND CITY COUNCIL OF THE CITY OF MARICOPA FINDING, PURSUANT TO A.R.S. §36-1473, THAT A REDEVELOPMENT AREA EXISTS IN THE MUNICIPALITY AND IDENTIFYING THAT REDEVELOPMENT AREA

WHEREAS, the State Community Development Block Grant Program Provides assistance for eligible activities which aid in the prevention or elimination of slum or blight; and

WHEREAS, the State Community Development Block Grant Program requires that an applicant requesting funds for an activity that will aid in the prevention or elimination of slum or blight identify a target area where such funds will be expended; and

WHEREAS, the City of Maricopa is applying for State Community Development Block Grant funds for an activity that will aid in the prevention or elimination of slum or blight.

NOW, THEREFORE, BE IT RESOLVED THAT the City of Maricopa finds, pursuant to A.R.S. § 36-1473, that the following area within the City of Maricopa and described as:

The land located in the Southern Half of Section 21 and the Northeast Quadrant of Section 38 (Bordered by Highway 347, Maricopa Meadows Subdivision and Altera Subdivision), of Township 4 South Range 3 East of the Gila and Salt River Base Meridian, Pinal County,

and further identified by the map attached as Exhibit A hereto,

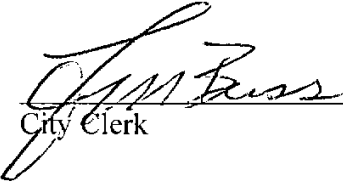
is an area qualifying as a redevelopment area pursuant to A.R.S. § 36-1471 and appropriate for a CDBG Redevelopment Project, and that such a project is necessary in the interest of the public health, safety, morals or welfare of the residents of the City to aid in the prevention and elimination of slum or blight.

Passed and adopted by a two-thirds vote of the City Council of Maricopa this 5th day of April, 2005.



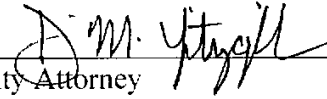
Mayor

ATTEST:



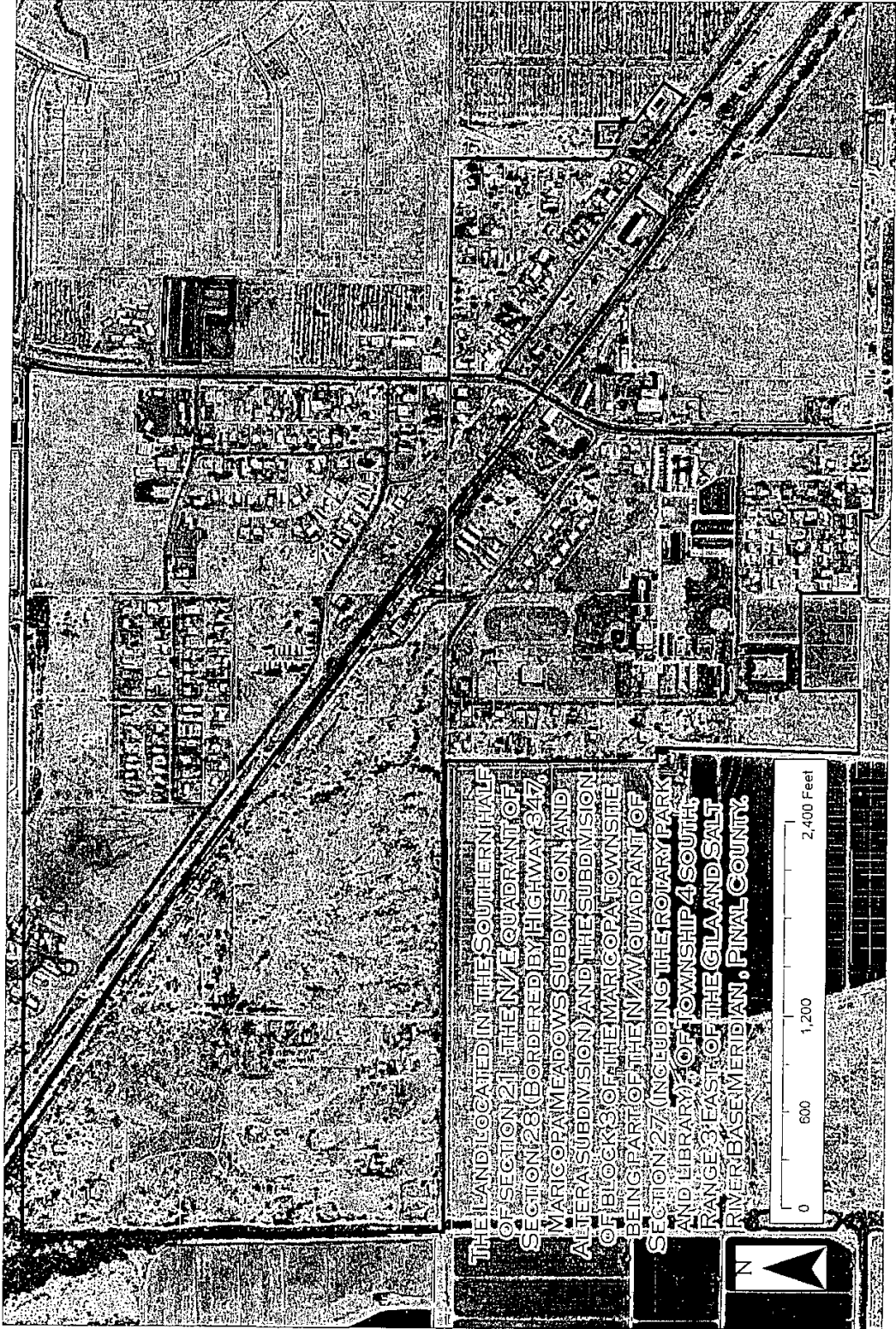
City Clerk

APPROVED AS TO FORM:



City Attorney

EXHIBIT "A"



THE LAND LOCATED IN THE SOUTHERN HALF OF SECTION 21, THE NE QUADRANT OF SECTION 28 (BORDERED BY HIGHWAY 847, MARIOPA MEADOWS SUBDIVISION, AND ALTEA SUBDIVISION) AND THE SUBDIVISION OF BLOCKS OF THE MARIOPA TOWNSITE BEING PART OF THE NW QUADRANT OF SECTION 27 (INCLUDING THE ROTARY PARK AND LIBRARY) OF TOWNSHIP 4 SOUTH, RANGE 3 EAST OF THE GILA AND SALT RIVER BASE MERIDIAN, PINAL COUNTY.

