

RESOLUTION NO. 06-04

A RESOLUTION OF THE MAYOR AND COMMON COUNCIL OF THE CITY OF MARICOPA, ARIZONA, ACCEPTING PUBLIC IMPROVEMENTS AND MAINTENANCE RESPONSIBILITY FOR ALL STREETS WITHIN ALTERRA NORTH, PARCELS 1, 1A, 2 and 2A INTO THE CITY STREET/ROAD MAINTENANCE SYSTEM. THE STREETS INCLUDE ALL LOCAL INTERNAL STREETS AND PORTIONS OF BOWLIN ROAD ADJACENT TO THE DEVELOPMENT.

WHEREAS, the City has received a request from the owner/developer to accept public improvements and maintenance responsibility for all streets within Alterra North, Parcels 1, 1A, 2 and 2A, into the City street/road maintenance system. The streets include all local internal streets and portions of Bowlin Road adjacent to the Development.

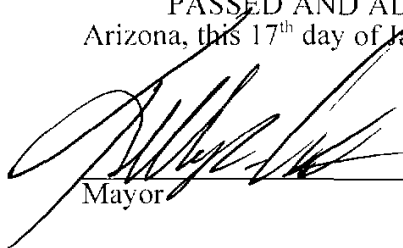
WHEREAS, it appears that the public improvements in question have been properly dedicated for public use; and

WHEREAS, the Maricopa Public Works Department has inspected the public improvements and has notified the Maricopa City Council that the public improvements have been installed to the satisfaction of the Maricopa Public Works Department; and

WHEREAS, it appears to the Maricopa City Council that the current owner has paid to the City the appropriate Subdivision Street Maintenance Fee, as established by Resolution 04-16, and any other applicable fees relating to the property;

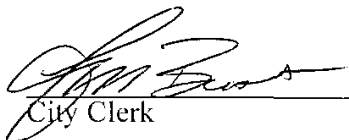
NOW, THEREFORE, BE IT RESOLVED that the Maricopa City Council hereby accepts all streets within Alterra North, Parcels 1, 1A, 2 and 2A, as indicated on the map attached as Exhibit "A" hereto, into the City road system for purposes of public use, ownership and future maintenance. The streets include all local internal streets and portions of Bowlin Road adjacent to the development. This Resolution shall be in full force and effect from and after its passage.

PASSED AND ADOPTED BY THE Mayor and Council of the City of Maricopa, Arizona, this 17th day of January, 2006.



Mayor

ATTEST:



City Clerk

APPROVED AS TO FORM:

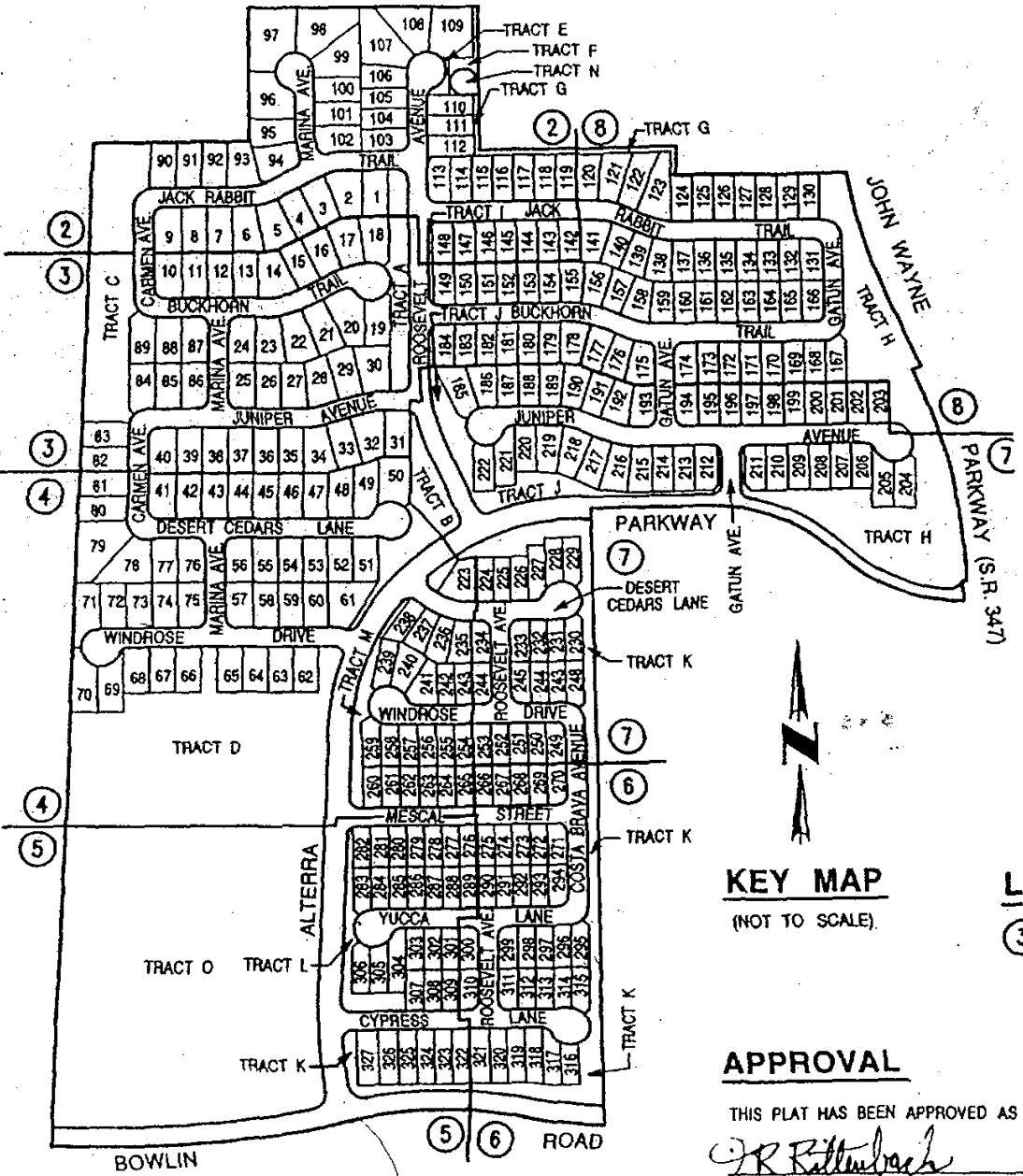


City Attorney

EXHIBIT "A"

RIVER BASE AND MERIDIAN, PINAL COUNTY, ARIZONA

IS E
 Y
 (ALE)
 IE: 45%
 RAGE
 B OR
 AIL
 **
 UE
)
 RADIUS
 ST
 DNS
 GLE
 MAY
 CALE)
 RAGE: 45%
 SF.
 GARAGE
 URB OR



ALTERRA NORTH

KEY MAP
(NOT TO SCALE)

APPROVAL

THIS PLAT HAS BEEN APPROVED AS
J.R. Rattenbach
 PINAL COUNTY PLANNING
 & DEVELOPMENT SERVICES
R.C.A.
 PINAL COUNTY ENVIRONMENTAL HEALTH