

RESOLUTION NO. 06-49

A RESOLUTION OF THE MAYOR AND COMMON COUNCIL OF THE CITY OF MARICOPA, ARIZONA, ACCEPTING PUBLIC IMPROVEMENTS AND MAINTENANCE RESPONSIBILITY FOR ALL STREETS WITHIN PARCELS 6, 7 AND 10 OF THE TORTOSA SUBDIVISION, INTO THE CITY STREET/ROAD MAINTENANCE SYSTEM. THE STREETS INCLUDE ALL LOCAL INTERNAL STREETS WITHIN PARCELS 6, 7 AND 10 OF THE TORTOSA SUBDIVISION.

WHEREAS, the City has received a request from the owner/developer to accept public improvements and maintenance responsibility for the local internal streets within Parcels 6, 7 and 10 of the Tortosa Subdivision, into the City street/road maintenance system. The streets include all local internal streets within Parcels 6, 7 and 10 of the Tortosa Subdivision.

WHEREAS, it appears that the public improvements in question have been properly dedicated for public use; and

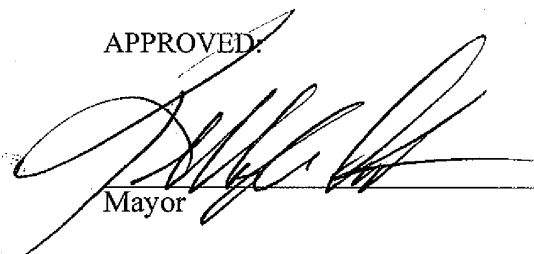
WHEREAS, the Maricopa Public Works Department has inspected the public improvements and has notified the Maricopa City Council that the public improvements have been installed to the satisfaction of the Maricopa Public Works Department; and

WHEREAS, it appears to the Maricopa City Council that the current owner has paid to the City the appropriate Subdivision Street Maintenance Fee, as established by Resolution 04-16, and any other applicable fees relating to the property;

NOW, THEREFORE, BE IT RESOLVED that the Maricopa City Council hereby accepts all local internal streets within Parcels 6, 7 and 10 of the Tortosa Subdivision, as indicated on the map attached as Exhibit "A" hereto, into the City road system for purposes of public use, ownership and future maintenance. The streets include all local internal streets within Parcels 6, 7 and 10 of the Tortosa Subdivision. This Resolution shall be in full force and effect from and after its passage.

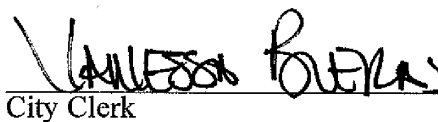
PASSED AND ADOPTED BY THE Mayor and Council of the City of Maricopa, Arizona, this 19th day of December, 2006.

APPROVED:



Mayor

ATTEST:



City Clerk

APPROVED AS TO FORM:

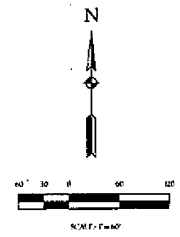
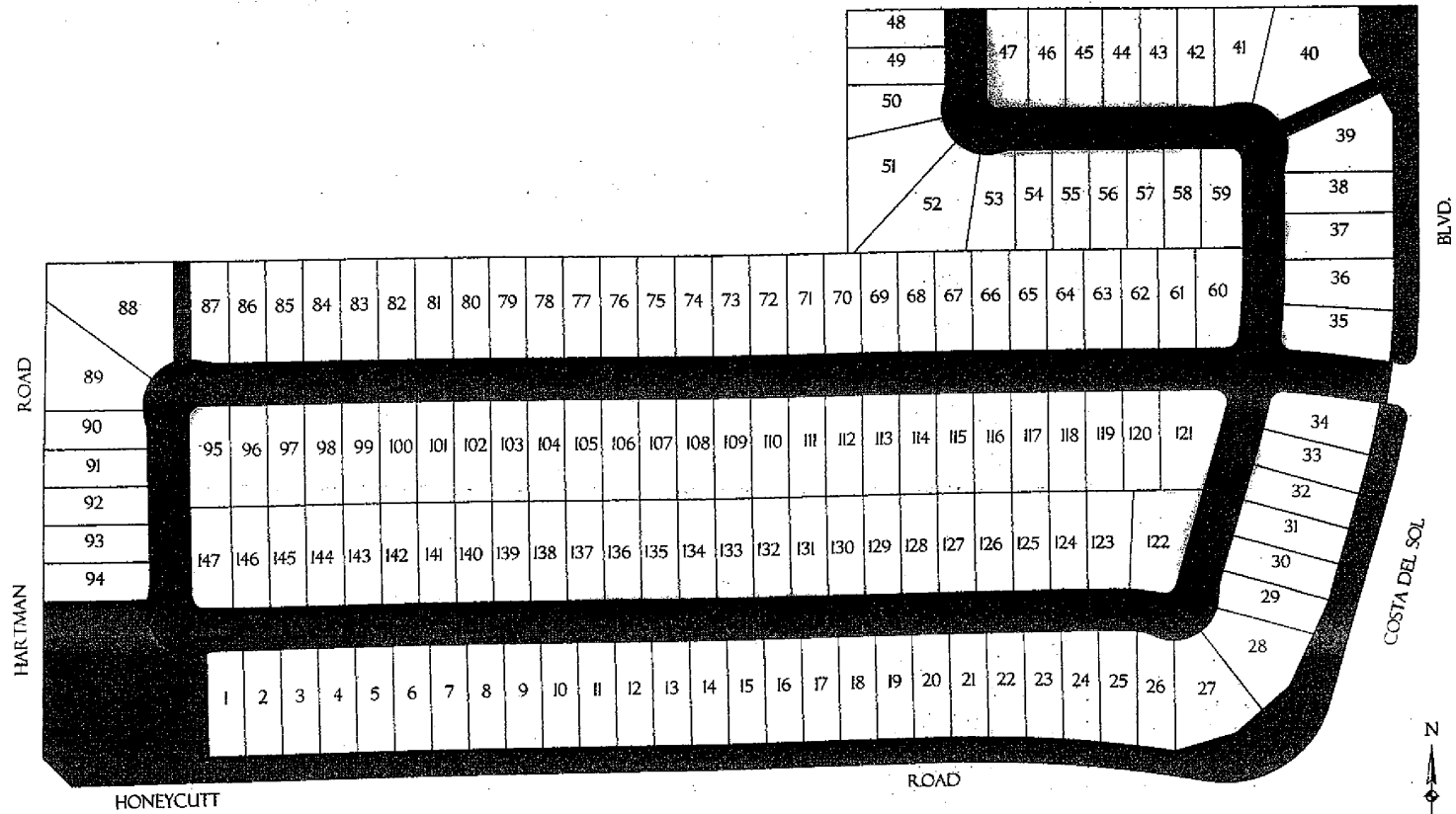


City Attorney

EXHIBIT "A"

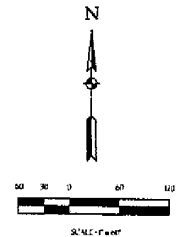
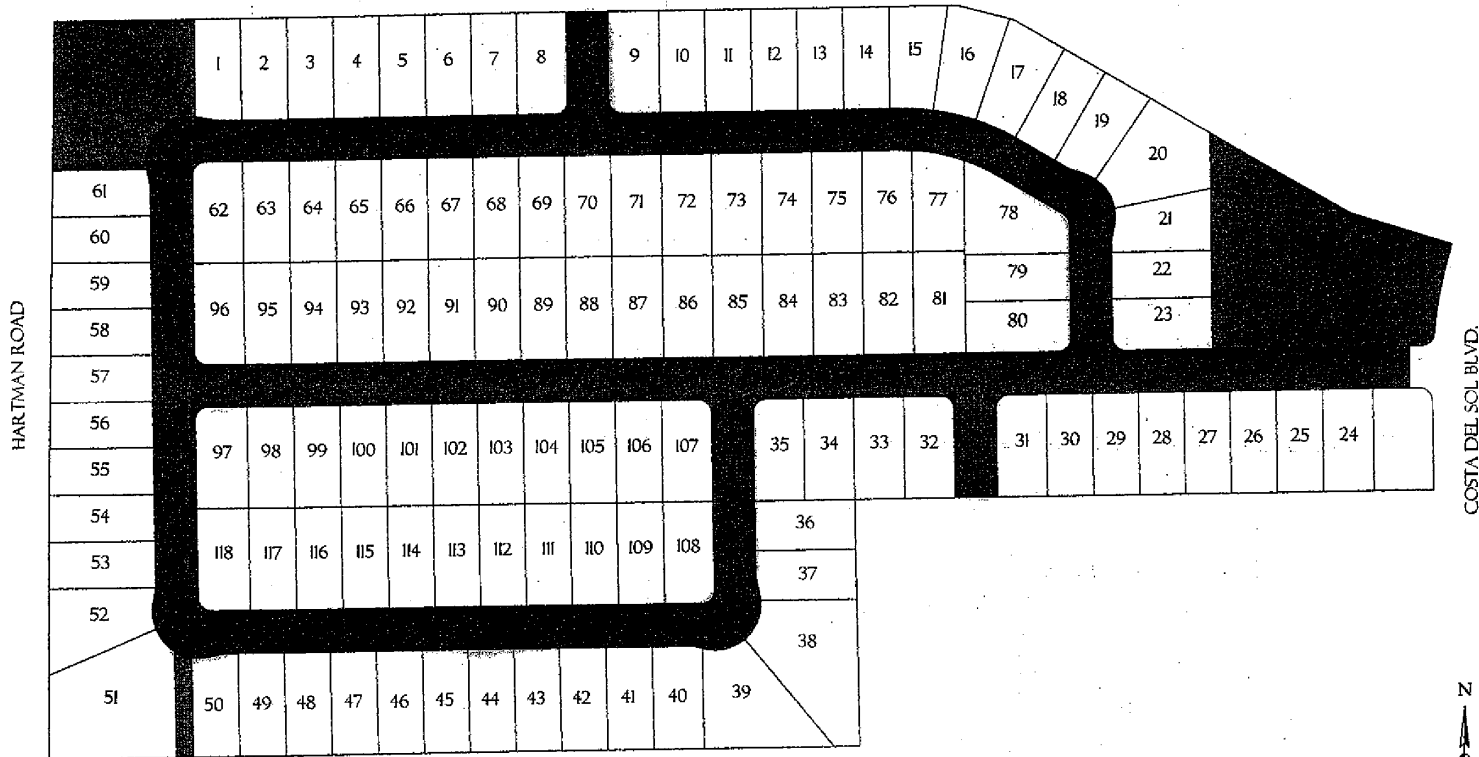
Streets to be accepted by City of Maricopa

Tortosa
Parcel 6

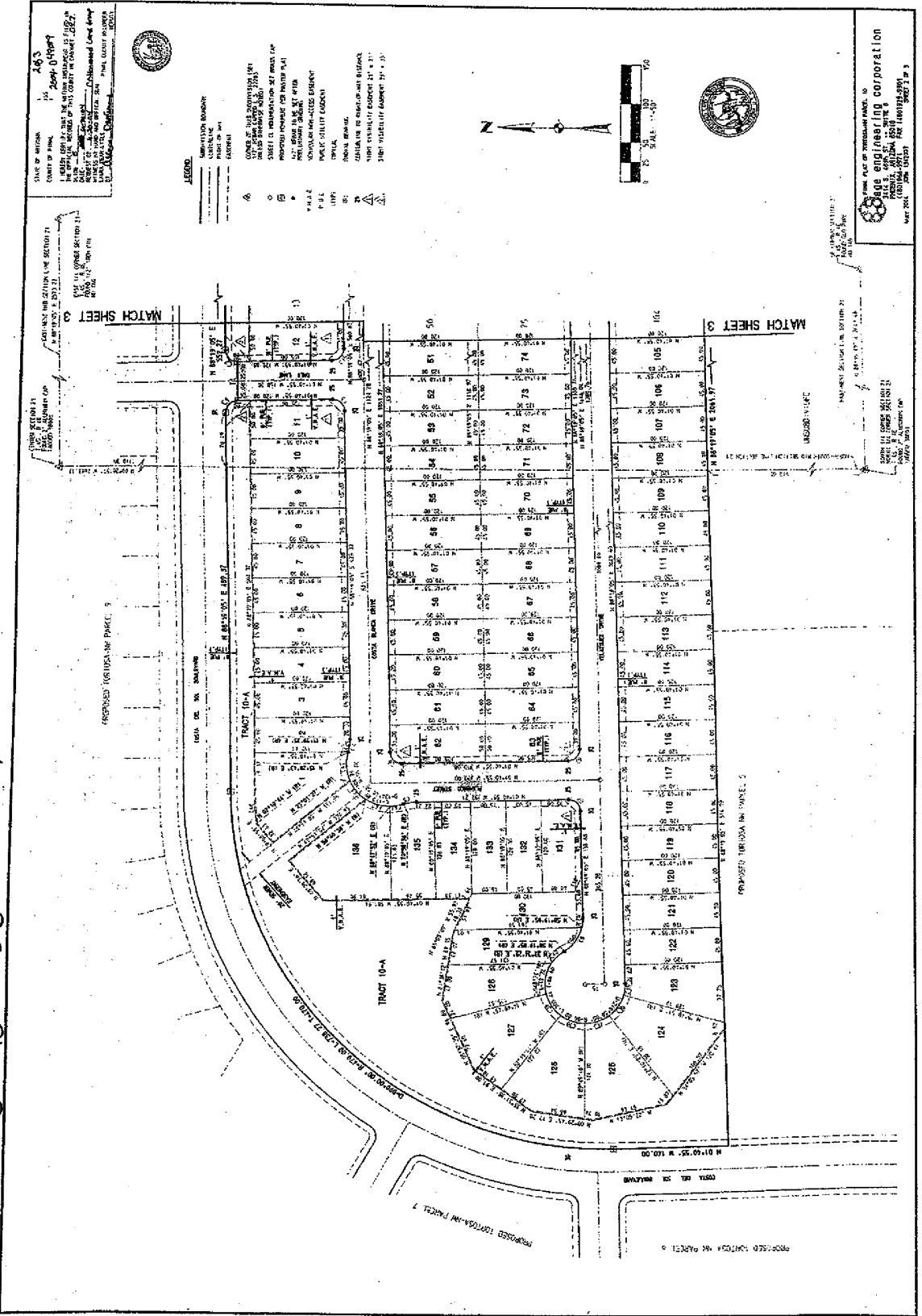


Streets to be accepted

Tortosa
Parcel 7



Streets to be accepted



MISSOURI ENGINEERING CORPORATION
1030 N. G. STREET, DES MOINES, IOWA 50319
REGISTERED PROFESSIONAL ENGINEERS
STATE OF MISSOURI
NO. 1000
EXPIRES 12/31/19

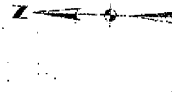
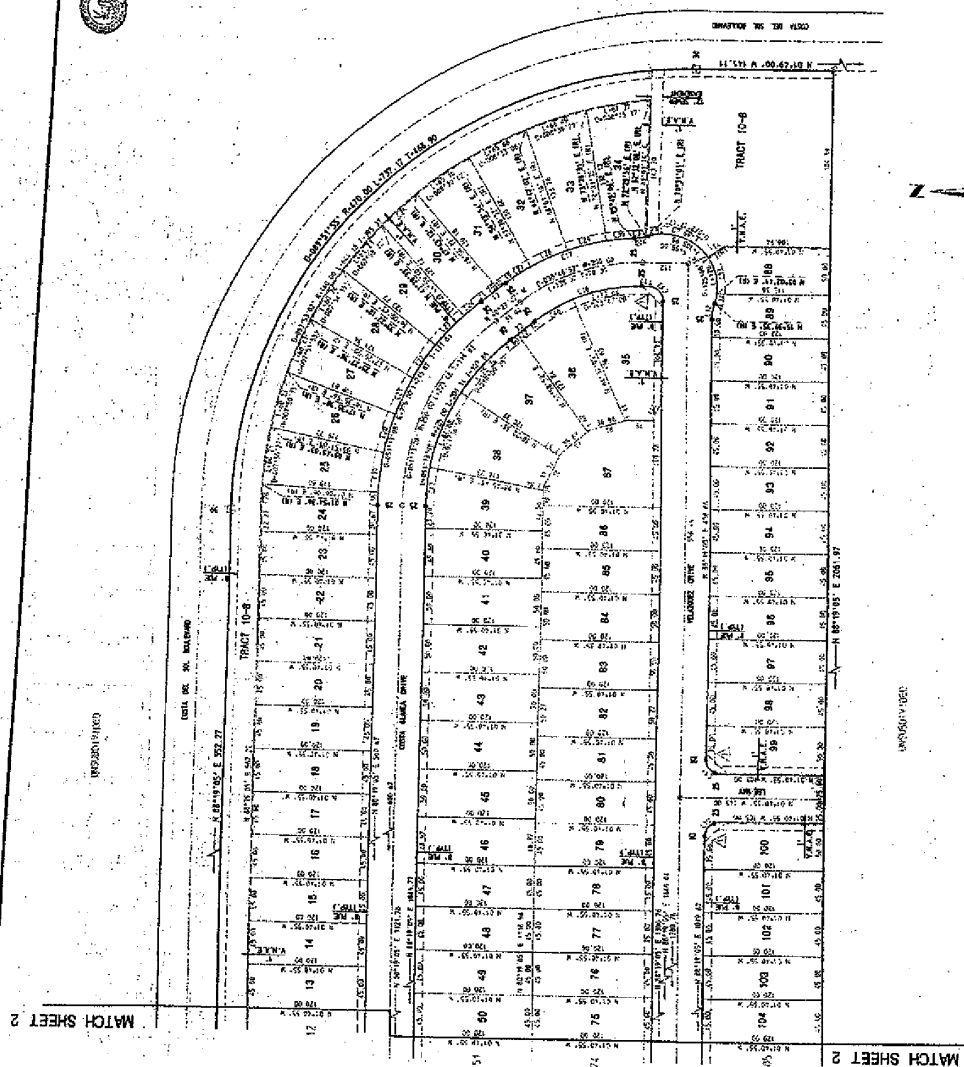
CITY OF PHOENIX
 PLANNING DEPARTMENT
 343
 LEGAL SERVICES DIVISION
 1100 N. CENTRAL AVENUE, SUITE 1100
 PHOENIX, ARIZONA 85004
 PHONE: (602) 257-2000
 FAX: (602) 257-2001

LEGEND
 IDENTIFICATION SYMBOLS
 BOUNDARY
 EASEMENT
 EJECTMENT

A CORNER OF THIS TRACT OR OF AN ADJACENT TRACT
 B STREET CENTERLINE
 C STREET CORNER POINT TO ADJACENT TRACT
 D POINT TO CENTERLINE OF ADJACENT TRACT
 E POINT TO CORNER OF ADJACENT TRACT
 F POINT TO CORNER OF ADJACENT TRACT
 G POINT TO CORNER OF ADJACENT TRACT
 H POINT TO CORNER OF ADJACENT TRACT
 I POINT TO CORNER OF ADJACENT TRACT
 J POINT TO CORNER OF ADJACENT TRACT
 K POINT TO CORNER OF ADJACENT TRACT
 L POINT TO CORNER OF ADJACENT TRACT
 M POINT TO CORNER OF ADJACENT TRACT
 N POINT TO CORNER OF ADJACENT TRACT
 O POINT TO CORNER OF ADJACENT TRACT
 P POINT TO CORNER OF ADJACENT TRACT
 Q POINT TO CORNER OF ADJACENT TRACT
 R POINT TO CORNER OF ADJACENT TRACT
 S POINT TO CORNER OF ADJACENT TRACT
 T POINT TO CORNER OF ADJACENT TRACT
 U POINT TO CORNER OF ADJACENT TRACT
 V POINT TO CORNER OF ADJACENT TRACT
 W POINT TO CORNER OF ADJACENT TRACT
 X POINT TO CORNER OF ADJACENT TRACT
 Y POINT TO CORNER OF ADJACENT TRACT
 Z POINT TO CORNER OF ADJACENT TRACT



THE ENGINEERING CORPORATION
 1100 N. CENTRAL AVENUE, SUITE 1100
 PHOENIX, ARIZONA 85004
 PHONE: (602) 257-2000
 FAX: (602) 257-2001



MATCH SHEET 2

MATCH SHEET 2

LINE TABLE

LINE	DESCRIPTION	DISTANCE
1
2
3
4
5
6
7
8
9
10
11
12
13
14
15
16
17
18
19
20
21
22
23
24
25
26
27
28
29
30
31
32
33
34
35
36
37
38
39
40
41
42
43
44
45
46
47
48
49
50
51
52
53
54
55
56
57
58
59
60
61
62
63
64
65
66
67
68
69
70
71
72
73
74
75
76
77
78
79
80
81
82
83
84
85
86
87
88
89
90
91
92
93
94
95
96
97
98
99
100

CORNER TABLE

LINE	ORDER	BEARING	DISTANCE	BEARING	DISTANCE
1	1
1	2
1	3
1	4
1	5
1	6
1	7
1	8
1	9
1	10
1	11
1	12
1	13
1	14
1	15
1	16
1	17
1	18
1	19
1	20
1	21
1	22
1	23
1	24
1	25
1	26
1	27
1	28
1	29
1	30
1	31
1	32
1	33
1	34
1	35
1	36
1	37
1	38
1	39
1	40
1	41
1	42
1	43
1	44
1	45
1	46
1	47
1	48
1	49
1	50
1	51
1	52
1	53
1	54
1	55
1	56
1	57
1	58
1	59
1	60
1	61
1	62
1	63
1	64
1	65
1	66
1	67
1	68
1	69
1	70
1	71
1	72
1	73
1	74
1	75
1	76
1	77
1	78
1	79
1	80
1	81
1	82
1	83
1	84
1	85
1	86
1	87
1	88
1	89
1	90
1	91
1	92
1	93
1	94
1	95
1	96
1	97
1	98
1	99
1	100