

RESOLUTION NO. 06-50

A RESOLUTION OF THE MAYOR AND COMMON COUNCIL OF THE CITY OF MARICOPA, ARIZONA, ACCEPTING PUBLIC IMPROVEMENTS AND MAINTENANCE RESPONSIBILITY FOR ALL STREETS WITHIN PARCELS 4 AND 5 OF THE GLENNWILDE SUBDIVISION, INTO THE CITY STREET/ROAD MAINTENANCE SYSTEM. THE STREETS INCLUDE ALL LOCAL INTERNAL STREETS WITHIN PARCELS 4 AND 5 OF THE GLENNWILDE SUBDIVISION.

WHEREAS, the City has received a request from the owner/developer to accept public improvements and maintenance responsibility for the local internal streets within Parcels 4 and 5 of the Glennwilde Subdivision, into the City street/road maintenance system. The streets include all local internal streets within Parcels 4 and 5 of the Glennwilde Subdivision.

WHEREAS, it appears that the public improvements in question have been properly dedicated for public use; and

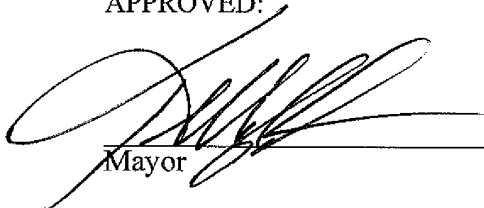
WHEREAS, the Maricopa Public Works Department has inspected the public improvements and has notified the Maricopa City Council that the public improvements have been installed to the satisfaction of the Maricopa Public Works Department; and

WHEREAS, it appears to the Maricopa City Council that the current owner has paid to the City the appropriate Subdivision Street Maintenance Fee, as established by Resolution 04-16, and any other applicable fees relating to the property;

NOW, THEREFORE, BE IT RESOLVED that the Maricopa City Council hereby accepts all local internal streets within Parcels 4 and 5 of the Glennwilde Subdivision, as indicated on the map attached as Exhibit "A" hereto, into the City road system for purposes of public use, ownership and future maintenance. The streets include all local internal streets within Parcels 4 and 5 of the Glennwilde Subdivision. This Resolution shall be in full force and effect from and after its passage.

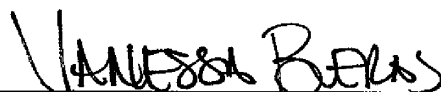
PASSED AND ADOPTED BY THE Mayor and Council of the City of Maricopa, Arizona, this 19th day of December, 2006.

APPROVED:



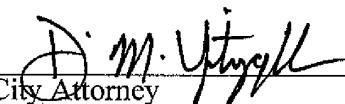
Mayor

ATTEST:



City Clerk

APPROVED AS TO FORM:



City Attorney

EXHIBIT "A"

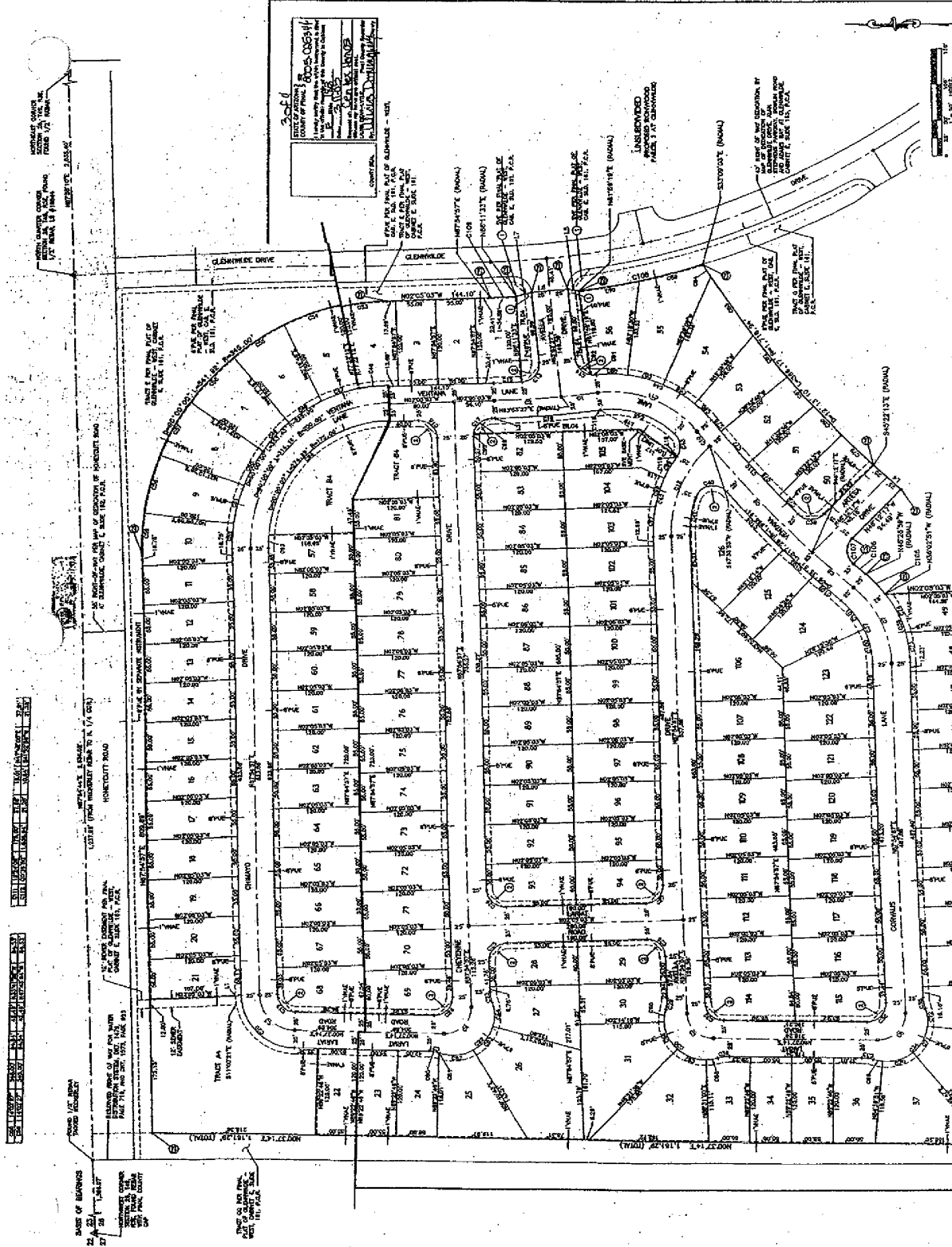
JMI & ASSOCIATES
 REAL ESTATE SERVICES
 1000 N. CENTRAL AVENUE, SUITE 100
 MARIETTA, GA 30067
 PHONE: 770.429.1111
 FAX: 770.429.1112
 WWW.JMI-ASSOCIATES.COM

JMI & ASSOCIATES
 REAL ESTATE SERVICES
 1000 N. CENTRAL AVENUE, SUITE 100
 MARIETTA, GA 30067
 PHONE: 770.429.1111
 FAX: 770.429.1112
 WWW.JMI-ASSOCIATES.COM

SEE SHEET 1 FOR CURBLINE BOUNDARY AND SHEET NOOK
 SEE SHEET 2 FOR LANE AND DRIVE TABLES



UNSUBDIVIDED
 PROJECT: MARIETTA
 PARCEL 4 AT GLENVIEW
 PARCELS 1-4

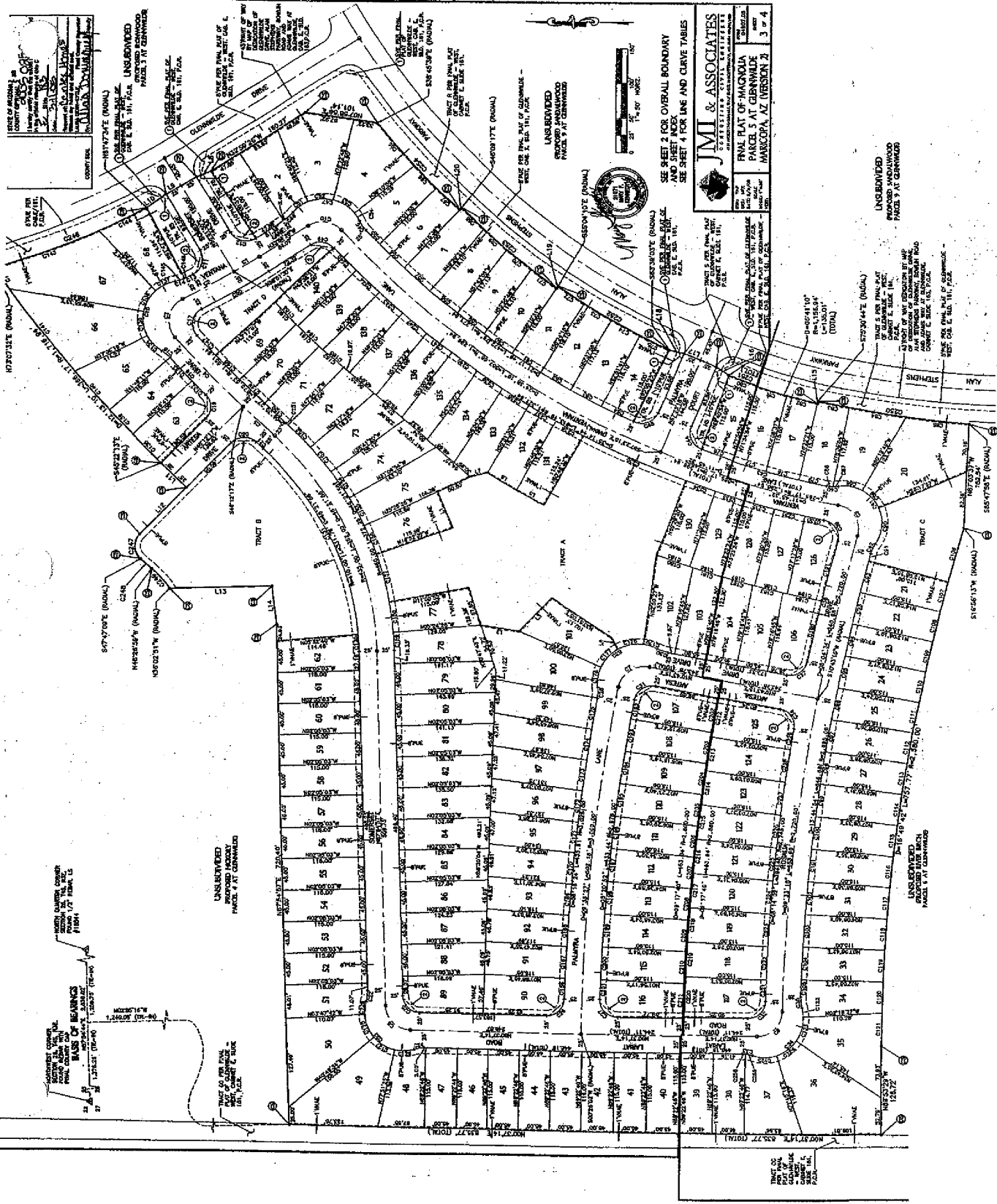


JMI & ASSOCIATES
 REAL ESTATE SERVICES
 1000 N. CENTRAL AVENUE, SUITE 100
 MARIETTA, GA 30067
 PHONE: 770.429.1111
 FAX: 770.429.1112
 WWW.JMI-ASSOCIATES.COM

RECORDING INFORMATION
 COUNTY OF DEKALB
 BOOK 11877 PAGE 118
 DATE 12/15/00

RECORDING INFORMATION
 COUNTY OF DEKALB
 BOOK 11877 PAGE 118
 DATE 12/15/00

RECORDING INFORMATION
 COUNTY OF DEKALB
 BOOK 11877 PAGE 118
 DATE 12/15/00



JMI & ASSOCIATES
 CONSULTING CIVIL ENGINEERS
 1000 W. UNIVERSITY AVENUE, SUITE 100
 MARIETTA, GA 30067
 PHONE: 770.429.1100
 FAX: 770.429.1101
 WWW.JMI-ASSOCIATES.COM

DATE: 08/11/2010
 DRAWN BY: JMI
 CHECKED BY: JMI
 PROJECT: SUBDIVISION MAP
 SHEET: 3 OF 4

SEE SHEET 2 FOR OVERALL BOUNDARY AND SHEET INDEX
 SEE SHEET 4 FOR LINES AND CURVE TABLES

UNRECORDED
 EASEMENT
 PARCELS 9 AT GARDNER

STATE OF GEORGIA
 COUNTY OF DEKALB
 DEPARTMENT OF REVENUE
 TAX COLLECTOR

DATE: 08/11/2010
 DRAWN BY: JMI
 CHECKED BY: JMI
 PROJECT: SUBDIVISION MAP
 SHEET: 3 OF 4

UNRECORDED
 EASEMENT
 PARCELS 1 AT GARDNER

UNRECORDED
 EASEMENT
 PARCELS 1 AT GARDNER

UNRECORDED
 EASEMENT
 PARCELS 1 AT GARDNER

UNRECORDED
 EASEMENT
 PARCELS 1 AT GARDNER