

RESOLUTION NO. 06-51

A RESOLUTION OF THE MAYOR AND COMMON COUNCIL OF THE CITY OF MARICOPA, ARIZONA, ACCEPTING PUBLIC IMPROVEMENTS AND MAINTENANCE RESPONSIBILITY FOR ALL STREETS WITHIN UNIT 1 PHASES 1 AND 2 OF THE MARICOPA GROVES SUBDIVISION, INTO THE CITY STREET/ROAD MAINTENANCE SYSTEM. THE STREETS INCLUDE ALL LOCAL INTERNAL STREETS WITHIN UNIT 1 PHASES 1 AND 2 OF THE MARICOPA GROVES SUBDIVISION.

WHEREAS, the City has received a request from the owner/developer to accept public improvements and maintenance responsibility for the local internal streets within Unit 1 Phases 1 and 2 of the Maricopa Groves Subdivision, into the City street/road maintenance system. The streets include all local internal streets within Unit 1 Phases 1 and 2 of the Maricopa Groves Subdivision.

WHEREAS, it appears that the public improvements in question have been properly dedicated for public use; and

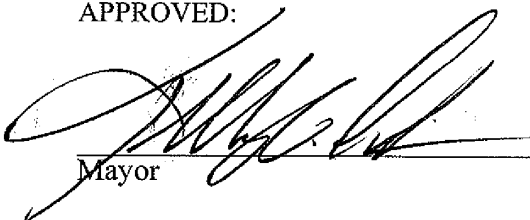
WHEREAS, the Maricopa Public Works Department has inspected the public improvements and has notified the Maricopa City Council that the public improvements have been installed to the satisfaction of the Maricopa Public Works Department; and

WHEREAS, it appears to the Maricopa City Council that the current owner has paid to the City the appropriate Subdivision Street Maintenance Fee, as established by Resolution 04-16, and any other applicable fees relating to the property;

NOW, THEREFORE, BE IT RESOLVED that the Maricopa City Council hereby accepts all local internal streets within Unit 1 Phases 1 and 2 of the Maricopa Groves Subdivision, as indicated on the map attached as Exhibit "A" hereto, into the City road system for purposes of public use, ownership and future maintenance. The streets include all local internal streets within Unit 1 Phases 1 and 2 of the Maricopa Groves Subdivision. This Resolution shall be in full force and effect from and after its passage.

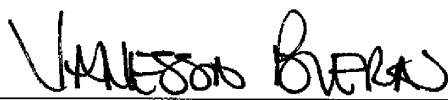
PASSED AND ADOPTED BY THE Mayor and Council of the City of Maricopa, Arizona, this 19th day of December, 2006.

APPROVED:



Mayor

ATTEST:



City Clerk

APPROVED AS TO FORM:



City Attorney

EXHIBIT "A"

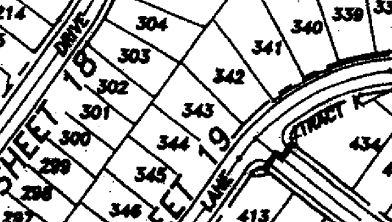
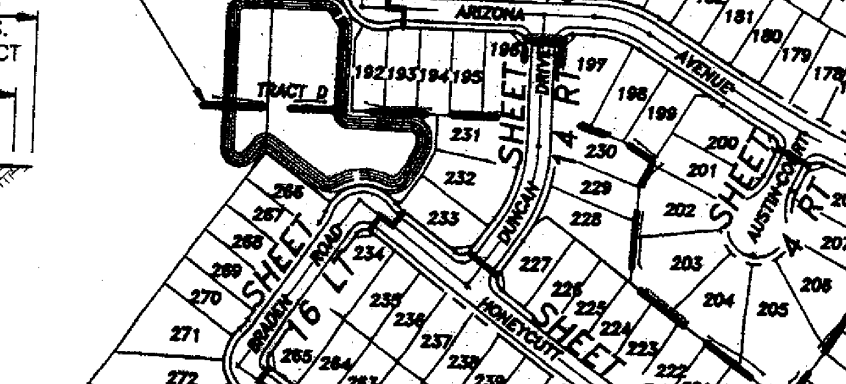
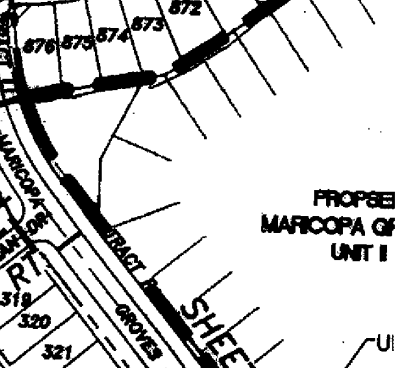
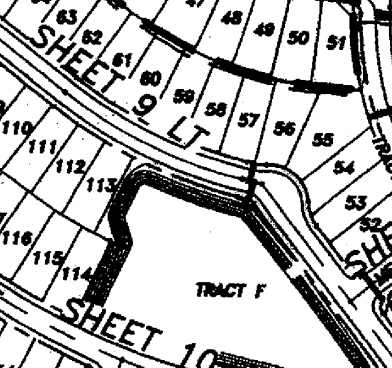
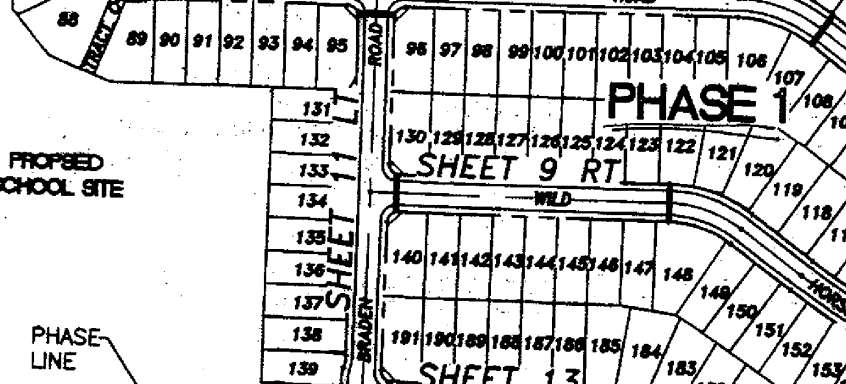
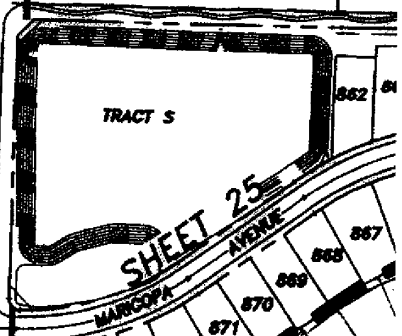
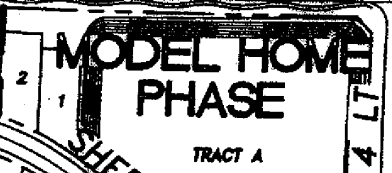
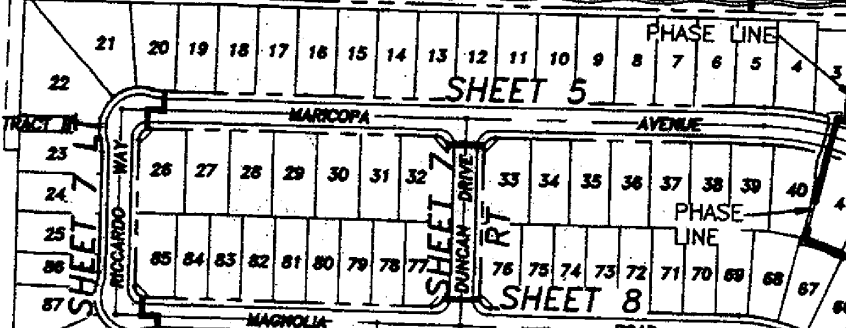
SHEET 28

SHEET 29

SHEET 30

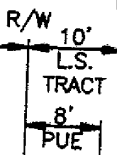
HONEYCUT ROAD

ROAD



PROPOSED SCHOOL SITE

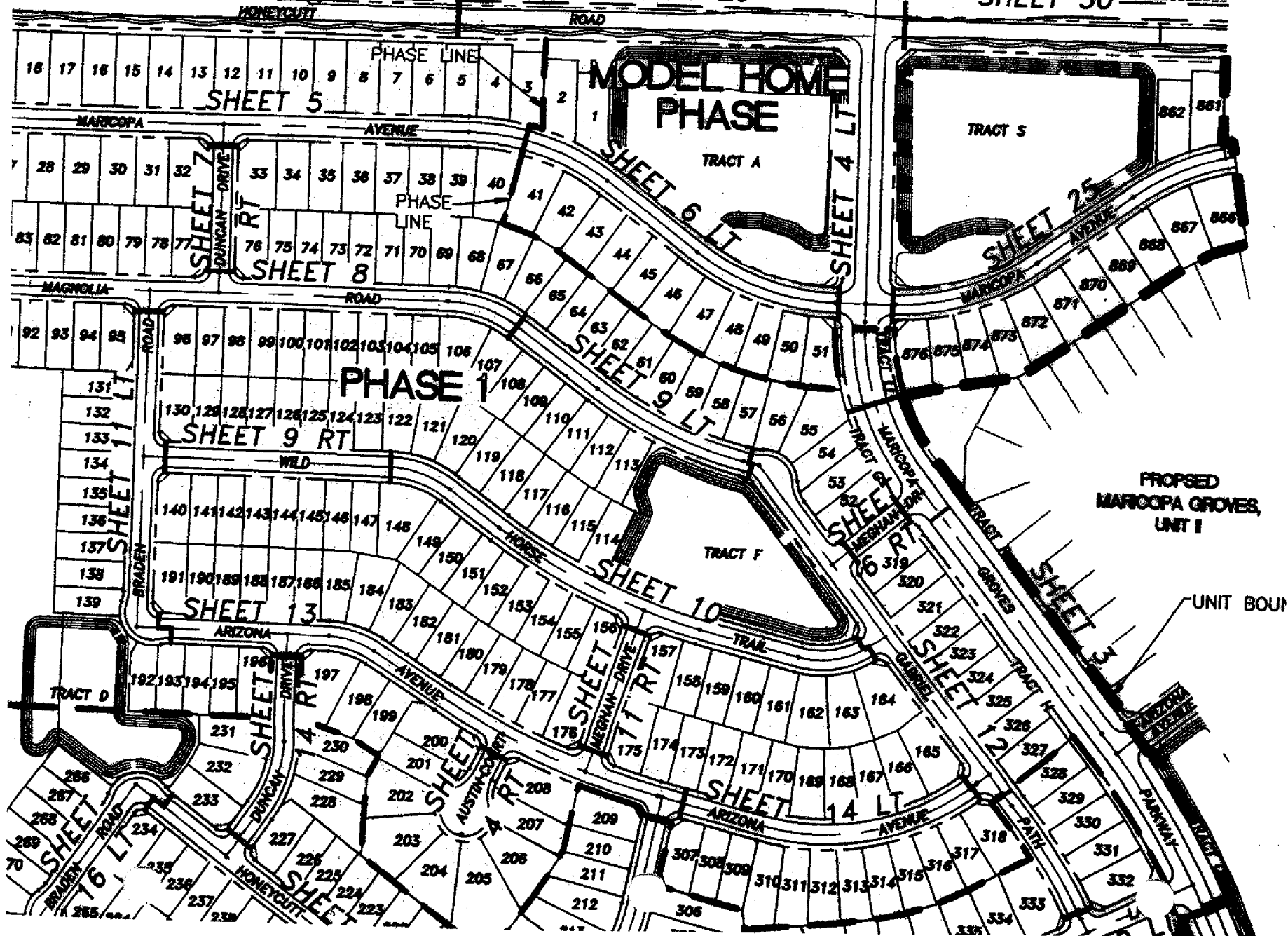
PROPOSED MARICOPA GOLF UNIT I

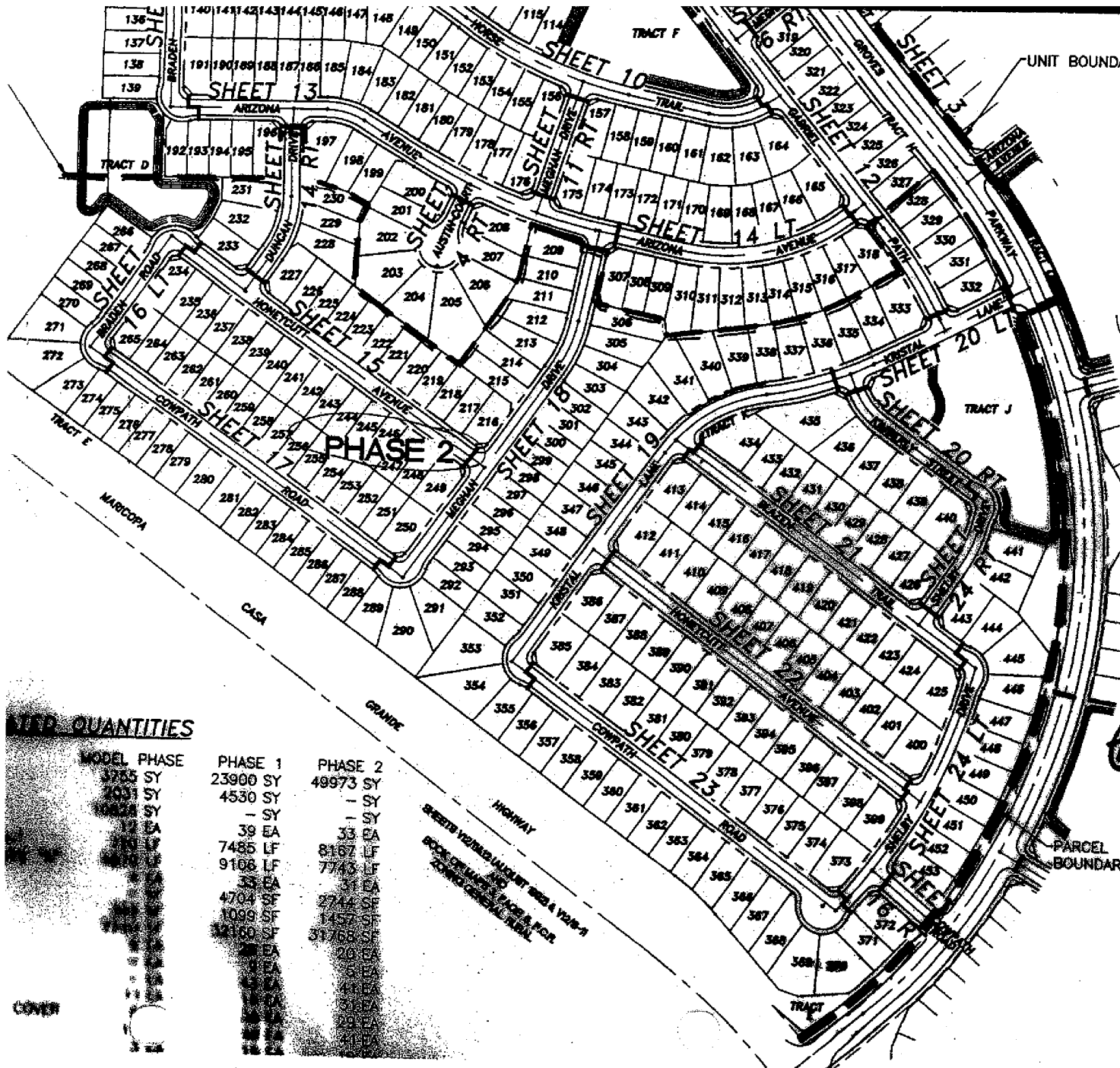


PHASE LINE

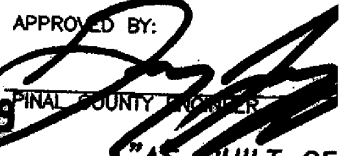
UI

TRACT J





- ⊕ PROPOSED FIRE
- ⊗ PROPOSED WATER
- EX 8"W— EXISTING WATER
- ⊗ EXISTING WATER
- ⊕ EXISTING FIRE
- 8"S— PROPOSED SEWER
- PROPOSED SEWER
- PROPOSED SEWER
- EX 8"S— EXISTING SEWER
- EXISTING SEWER
- OHE— EXISTING OVERHEAD
- ⊕ STREET SIGN
- ▭ DRIVEWAY
- ◆ INDICATES GRADE
- 1002— EXISTING CONTOUR
- ▨ STORM DRAIN
- FL— FLOW LINE ELEVATION
- ▨ GROUTED RIP-RAP

APPROVED BY:

 PINAL COUNTY ENGINEER
"AS-BUILT CE"

I HEREBY CERTIFY THAT THE "AS-BUILT CE" OBTAINED UNDER MY DIRECT SUPERVISION TO THE BEST OF MY KNOWLEDGE

REGISTERED LAND SURVEYOR/ENGINEER

"AS-BUILT CE"

I HEREBY CERTIFY THAT THE "AS-BUILT CE" OBTAINED UNDER MY DIRECT SUPERVISION TO THE BEST OF MY KNOWLEDGE

QUANTITIES

MODEL	PHASE 1	PHASE 2
3235 SY	23900 SY	48973 SY
4031 SY	4530 SY	- SY
4822 SY	- SY	- SY
EA	39 EA	33 EA
LF	7485 LF	8167 LF
LF	9106 LF	7745 LF
EA	33 EA	EA
SF	4704 SF	2744 SF
SF	1099 SF	1475 SF
SF	14100 SF	31765 SF

COVER