

**RESOLUTION NO. 06-52**

**A RESOLUTION OF THE MAYOR AND COMMON COUNCIL OF THE CITY OF MARICOPA, ARIZONA, ACCEPTING PUBLIC IMPROVEMENTS AND MAINTENANCE RESPONSIBILITY FOR ALL STREETS WITHIN PARCELS 4 AND 12 OF THE MARICOPA MEADOWS SUBDIVISION, INTO THE CITY STREET/ROAD MAINTENANCE SYSTEM. THE STREETS INCLUDE ALL LOCAL INTERNAL STREETS WITHIN PARCELS 4 AND 12 OF THE MARICOPA MEADOWS SUBDIVISION.**

**WHEREAS**, the City has received a request from the owner/developer to accept public improvements and maintenance responsibility for the local internal streets within Parcels 4 and 12 of the Maricopa Meadows Subdivision, into the City street/road maintenance system. The streets include all local internal streets within Parcels 4 and 12 of the Maricopa Meadows Subdivision.

**WHEREAS**, it appears that the public improvements in question have been properly dedicated for public use; and

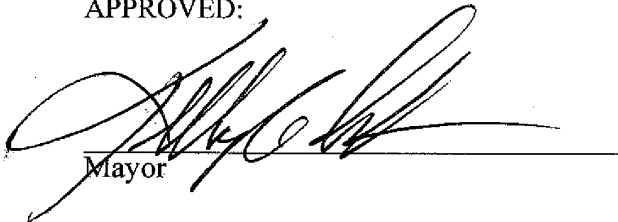
**WHEREAS**, the Maricopa Public Works Department has inspected the public improvements and has notified the Maricopa City Council that the public improvements have been installed to the satisfaction of the Maricopa Public Works Department; and

**WHEREAS**, it appears to the Maricopa City Council that the current owner has paid to the City the appropriate Subdivision Street Maintenance Fee, as established by Resolution 04-16, and any other applicable fees relating to the property;

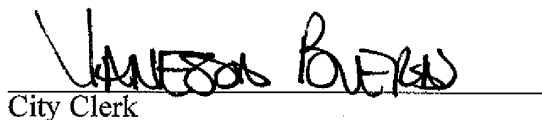
**NOW, THEREFORE, BE IT RESOLVED** that the Maricopa City Council hereby accepts all local internal streets within Parcels 4 and 12 of the Maricopa Meadows Subdivision, as indicated on the map attached as Exhibit "A" hereto, into the City road system for purposes of public use, ownership and future maintenance. The streets include all local internal streets within Parcels 4 and 12 of the Maricopa Meadows Subdivision. This Resolution shall be in full force and effect from and after its passage.

PASSED AND ADOPTED BY THE Mayor and Council of the City of Maricopa, Arizona, this 19<sup>th</sup> day of December, 2006.

APPROVED:

  
\_\_\_\_\_  
Mayor

ATTEST:

  
\_\_\_\_\_  
City Clerk

APPROVED AS TO FORM:

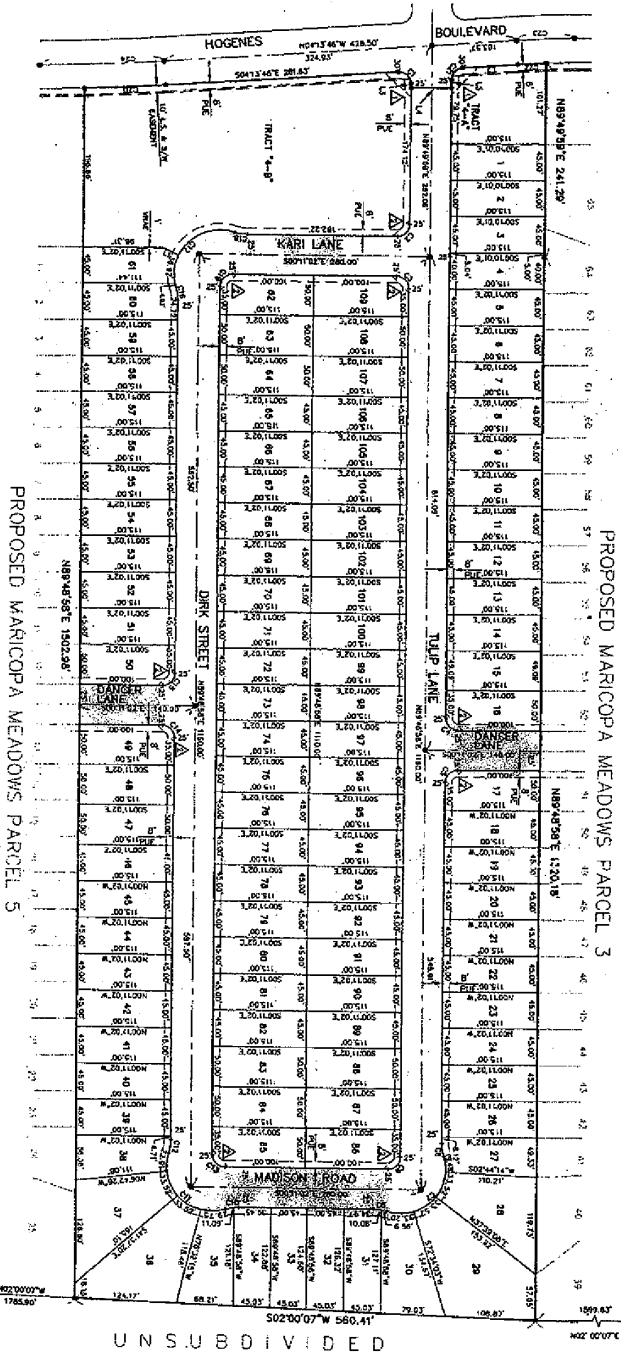
  
\_\_\_\_\_  
City Attorney

***EXHIBIT "A"***

Streets to be dedicated to the City of Maricopa

Maricopa Meadows Parcel 4

PROPOSED MARICOPA MEADOWS PARCEL 12



PROPOSED MARICOPA MEADOWS PARCEL 3

PROPOSED MARICOPA MEADOWS PARCEL 5

STATION	CHORD BEARING	CHORD DISTANCE	ARC BEARING	ARC DISTANCE
1+00.00	S 89° 59' 59" W	100.00	89° 59' 59"	100.00
1+100.00	S 89° 59' 59" W	100.00	89° 59' 59"	200.00
1+200.00	S 89° 59' 59" W	100.00	89° 59' 59"	300.00
1+300.00	S 89° 59' 59" W	100.00	89° 59' 59"	400.00
1+400.00	S 89° 59' 59" W	100.00	89° 59' 59"	500.00
1+500.00	S 89° 59' 59" W	100.00	89° 59' 59"	600.00
1+600.00	S 89° 59' 59" W	100.00	89° 59' 59"	700.00
1+700.00	S 89° 59' 59" W	100.00	89° 59' 59"	800.00
1+800.00	S 89° 59' 59" W	100.00	89° 59' 59"	900.00
1+900.00	S 89° 59' 59" W	100.00	89° 59' 59"	1000.00

STATION	CHORD BEARING	CHORD DISTANCE	ARC BEARING	ARC DISTANCE
1+00.00	S 89° 59' 59" W	100.00	89° 59' 59"	100.00
1+100.00	S 89° 59' 59" W	100.00	89° 59' 59"	200.00
1+200.00	S 89° 59' 59" W	100.00	89° 59' 59"	300.00
1+300.00	S 89° 59' 59" W	100.00	89° 59' 59"	400.00
1+400.00	S 89° 59' 59" W	100.00	89° 59' 59"	500.00
1+500.00	S 89° 59' 59" W	100.00	89° 59' 59"	600.00
1+600.00	S 89° 59' 59" W	100.00	89° 59' 59"	700.00
1+700.00	S 89° 59' 59" W	100.00	89° 59' 59"	800.00
1+800.00	S 89° 59' 59" W	100.00	89° 59' 59"	900.00
1+900.00	S 89° 59' 59" W	100.00	89° 59' 59"	1000.00

STATION	CHORD BEARING	CHORD DISTANCE	ARC BEARING	ARC DISTANCE
1+00.00	S 89° 59' 59" W	100.00	89° 59' 59"	100.00
1+100.00	S 89° 59' 59" W	100.00	89° 59' 59"	200.00
1+200.00	S 89° 59' 59" W	100.00	89° 59' 59"	300.00
1+300.00	S 89° 59' 59" W	100.00	89° 59' 59"	400.00
1+400.00	S 89° 59' 59" W	100.00	89° 59' 59"	500.00
1+500.00	S 89° 59' 59" W	100.00	89° 59' 59"	600.00
1+600.00	S 89° 59' 59" W	100.00	89° 59' 59"	700.00
1+700.00	S 89° 59' 59" W	100.00	89° 59' 59"	800.00
1+800.00	S 89° 59' 59" W	100.00	89° 59' 59"	900.00
1+900.00	S 89° 59' 59" W	100.00	89° 59' 59"	1000.00

STATION	CHORD BEARING	CHORD DISTANCE	ARC BEARING	ARC DISTANCE
1+00.00	S 89° 59' 59" W	100.00	89° 59' 59"	100.00
1+100.00	S 89° 59' 59" W	100.00	89° 59' 59"	200.00
1+200.00	S 89° 59' 59" W	100.00	89° 59' 59"	300.00
1+300.00	S 89° 59' 59" W	100.00	89° 59' 59"	400.00
1+400.00	S 89° 59' 59" W	100.00	89° 59' 59"	500.00
1+500.00	S 89° 59' 59" W	100.00	89° 59' 59"	600.00
1+600.00	S 89° 59' 59" W	100.00	89° 59' 59"	700.00
1+700.00	S 89° 59' 59" W	100.00	89° 59' 59"	800.00
1+800.00	S 89° 59' 59" W	100.00	89° 59' 59"	900.00
1+900.00	S 89° 59' 59" W	100.00	89° 59' 59"	1000.00

STATION	CHORD BEARING	CHORD DISTANCE	ARC BEARING	ARC DISTANCE
1+00.00	S 89° 59' 59" W	100.00	89° 59' 59"	100.00
1+100.00	S 89° 59' 59" W	100.00	89° 59' 59"	200.00
1+200.00	S 89° 59' 59" W	100.00	89° 59' 59"	300.00
1+300.00	S 89° 59' 59" W	100.00	89° 59' 59"	400.00
1+400.00	S 89° 59' 59" W	100.00	89° 59' 59"	500.00
1+500.00	S 89° 59' 59" W	100.00	89° 59' 59"	600.00
1+600.00	S 89° 59' 59" W	100.00	89° 59' 59"	700.00
1+700.00	S 89° 59' 59" W	100.00	89° 59' 59"	800.00
1+800.00	S 89° 59' 59" W	100.00	89° 59' 59"	900.00
1+900.00	S 89° 59' 59" W	100.00	89° 59' 59"	1000.00

STATION	CHORD BEARING	CHORD DISTANCE	ARC BEARING	ARC DISTANCE
1+00.00	S 89° 59' 59" W	100.00	89° 59' 59"	100.00
1+100.00	S 89° 59' 59" W	100.00	89° 59' 59"	200.00
1+200.00	S 89° 59' 59" W	100.00	89° 59' 59"	300.00
1+300.00	S 89° 59' 59" W	100.00	89° 59' 59"	400.00
1+400.00	S 89° 59' 59" W	100.00	89° 59' 59"	500.00
1+500.00	S 89° 59' 59" W	100.00	89° 59' 59"	600.00
1+600.00	S 89° 59' 59" W	100.00	89° 59' 59"	700.00
1+700.00	S 89° 59' 59" W	100.00	89° 59' 59"	800.00
1+800.00	S 89° 59' 59" W	100.00	89° 59' 59"	900.00
1+900.00	S 89° 59' 59" W	100.00	89° 59' 59"	1000.00

STATION	CHORD BEARING	CHORD DISTANCE	ARC BEARING	ARC DISTANCE
1+00.00	S 89° 59' 59" W	100.00	89° 59' 59"	100.00
1+100.00	S 89° 59' 59" W	100.00	89° 59' 59"	200.00
1+200.00	S 89° 59' 59" W	100.00	89° 59' 59"	300.00
1+300.00	S 89° 59' 59" W	100.00	89° 59' 59"	400.00
1+400.00	S 89° 59' 59" W	100.00	89° 59' 59"	500.00
1+500.00	S 89° 59' 59" W	100.00	89° 59' 59"	600.00
1+600.00	S 89° 59' 59" W	100.00	89° 59' 59"	700.00
1+700.00	S 89° 59' 59" W	100.00	89° 59' 59"	800.00
1+800.00	S 89° 59' 59" W	100.00	89° 59' 59"	900.00
1+900.00	S 89° 59' 59" W	100.00	89° 59' 59"	1000.00

STATION	CHORD BEARING	CHORD DISTANCE	ARC BEARING	ARC DISTANCE
1+00.00	S 89° 59' 59" W	100.00	89° 59' 59"	100.00
1+100.00	S 89° 59' 59" W	100.00	89° 59' 59"	200.00
1+200.00	S 89° 59' 59" W	100.00	89° 59' 59"	300.00
1+300.00	S 89° 59' 59" W	100.00	89° 59' 59"	400.00
1+400.00	S 89° 59' 59" W	100.00	89° 59' 59"	500.00
1+500.00	S 89° 59' 59" W	100.00	89° 59' 59"	600.00
1+600.00	S 89° 59' 59" W	100.00	89° 59' 59"	700.00
1+700.00	S 89° 59' 59" W	100.00	89° 59' 59"	800.00
1+800.00	S 89° 59' 59" W	100.00	89° 59' 59"	900.00
1+900.00	S 89° 59' 59" W	100.00	89° 59' 59"	1000.00

LEGEND:



DATE: 9/18/2003

Project No. 11674

Maricopa Meadows - Parcel 4

Sheet No. P4-2 of 82

STATE OF ARIZONA

COUNTY OF MARICOPA

2003-01740

1. I hereby certify that the within instrument is the true and correct copy of the original instrument filed for record in the County of Maricopa, State of Arizona, on 09/18/2003 at 10:22:00 AM.

2. I am a duly qualified and acting County Recorder for the County of Maricopa, State of Arizona.

3. My term of office expires on 01/01/2005.

4. My office is located at 1000 North Central Avenue, Suite 100, Phoenix, Arizona 85004.

5. My commission expires on 01/01/2005.

6. My office is located at 1000 North Central Avenue, Suite 100, Phoenix, Arizona 85004.

7. My office is located at 1000 North Central Avenue, Suite 100, Phoenix, Arizona 85004.

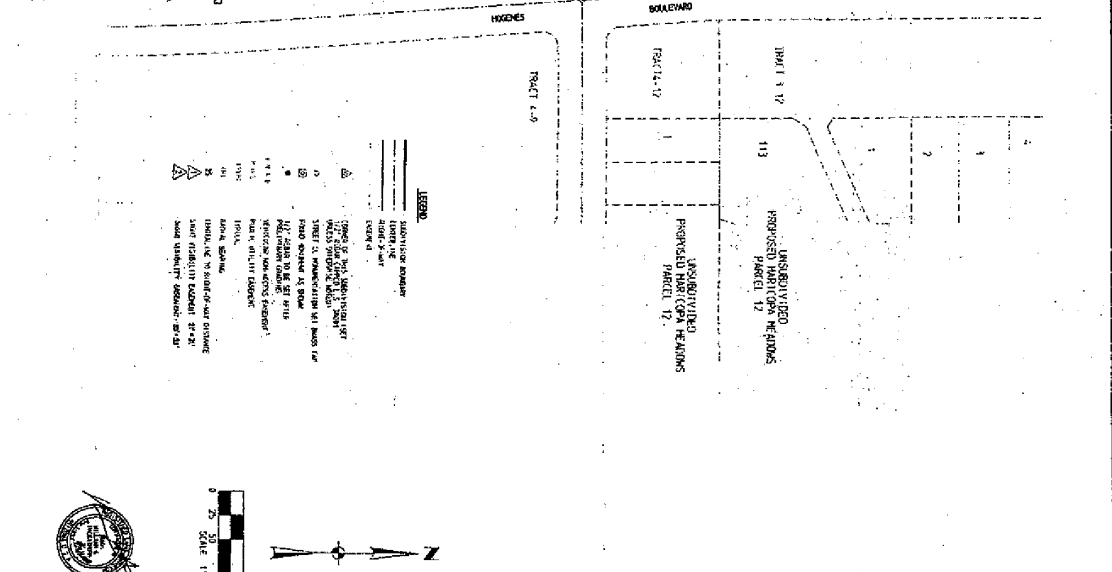
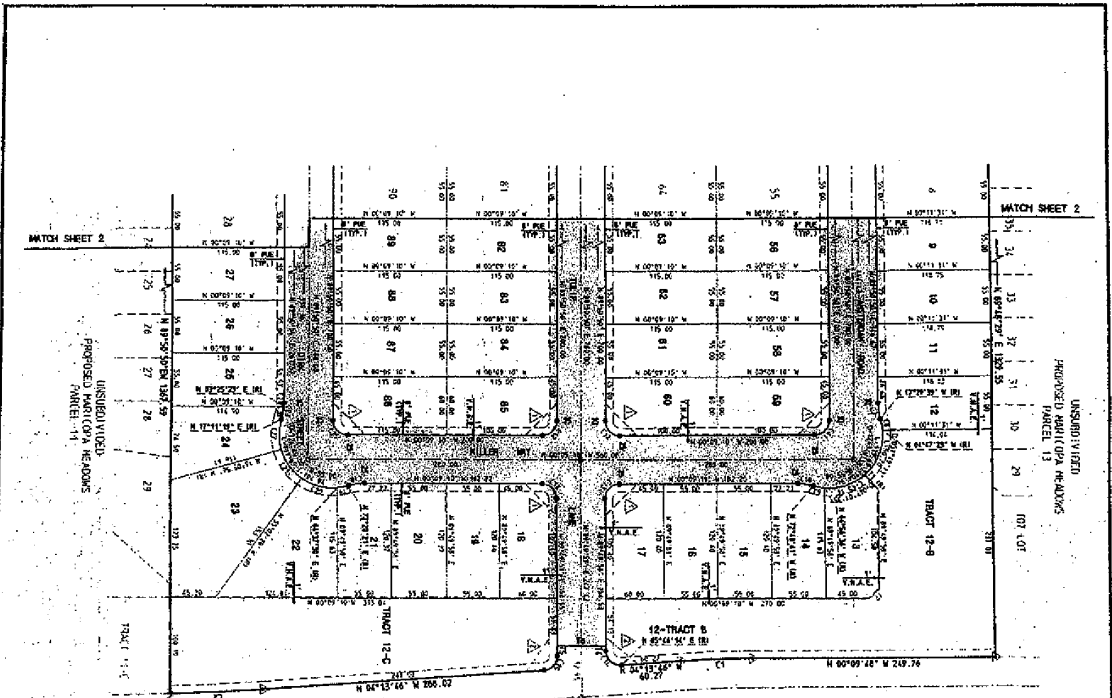
8. My office is located at 1000 North Central Avenue, Suite 100, Phoenix, Arizona 85004.

9. My office is located at 1000 North Central Avenue, Suite 100, Phoenix, Arizona 85004.

10. My office is located at 1000 North Central Avenue, Suite 100, Phoenix, Arizona 85004.

UNSUBDIVIDED





FILE	DESCRIPTION	DISTANCE	BEARING	AREA	PERCENT
1	1-10-11-12-13	21.00	N 89° 58' 30" W	1.14	1.14
2	1-10-14-15-16	15.00	N 89° 58' 30" W	0.84	0.84
3	1-10-17-18-19	15.00	N 89° 58' 30" W	0.84	0.84
4	1-10-20-21-22	15.00	N 89° 58' 30" W	0.84	0.84
5	1-10-23-24-25	15.00	N 89° 58' 30" W	0.84	0.84
6	1-10-26-27-28	15.00	N 89° 58' 30" W	0.84	0.84
7	1-10-29-30-31	15.00	N 89° 58' 30" W	0.84	0.84
8	1-10-32-33-34	15.00	N 89° 58' 30" W	0.84	0.84
9	1-10-35-36-37	15.00	N 89° 58' 30" W	0.84	0.84
10	1-10-38-39-40	15.00	N 89° 58' 30" W	0.84	0.84
11	1-10-41-42-43	15.00	N 89° 58' 30" W	0.84	0.84
12	1-10-44-45-46	15.00	N 89° 58' 30" W	0.84	0.84
13	1-10-47-48-49	15.00	N 89° 58' 30" W	0.84	0.84
14	1-10-50-51-52	15.00	N 89° 58' 30" W	0.84	0.84
15	1-10-53-54-55	15.00	N 89° 58' 30" W	0.84	0.84
16	1-10-56-57-58	15.00	N 89° 58' 30" W	0.84	0.84
17	1-10-59-60-61	15.00	N 89° 58' 30" W	0.84	0.84
18	1-10-62-63-64	15.00	N 89° 58' 30" W	0.84	0.84
19	1-10-65-66-67	15.00	N 89° 58' 30" W	0.84	0.84
20	1-10-68-69-70	15.00	N 89° 58' 30" W	0.84	0.84
21	1-10-71-72-73	15.00	N 89° 58' 30" W	0.84	0.84
22	1-10-74-75-76	15.00	N 89° 58' 30" W	0.84	0.84
23	1-10-77-78-79	15.00	N 89° 58' 30" W	0.84	0.84
24	1-10-80-81-82	15.00	N 89° 58' 30" W	0.84	0.84
25	1-10-83-84-85	15.00	N 89° 58' 30" W	0.84	0.84
26	1-10-86-87-88	15.00	N 89° 58' 30" W	0.84	0.84
27	1-10-89-90-91	15.00	N 89° 58' 30" W	0.84	0.84
28	1-10-92-93-94	15.00	N 89° 58' 30" W	0.84	0.84
29	1-10-95-96-97	15.00	N 89° 58' 30" W	0.84	0.84
30	1-10-98-99-100	15.00	N 89° 58' 30" W	0.84	0.84
31	1-10-101-102-103	15.00	N 89° 58' 30" W	0.84	0.84
32	1-10-104-105-106	15.00	N 89° 58' 30" W	0.84	0.84
33	1-10-107-108-109	15.00	N 89° 58' 30" W	0.84	0.84
34	1-10-110-111-112	15.00	N 89° 58' 30" W	0.84	0.84
35	1-10-113-114-115	15.00	N 89° 58' 30" W	0.84	0.84
36	1-10-116-117-118	15.00	N 89° 58' 30" W	0.84	0.84
37	1-10-119-120-121	15.00	N 89° 58' 30" W	0.84	0.84
38	1-10-122-123-124	15.00	N 89° 58' 30" W	0.84	0.84
39	1-10-125-126-127	15.00	N 89° 58' 30" W	0.84	0.84
40	1-10-128-129-130	15.00	N 89° 58' 30" W	0.84	0.84
41	1-10-131-132-133	15.00	N 89° 58' 30" W	0.84	0.84
42	1-10-134-135-136	15.00	N 89° 58' 30" W	0.84	0.84
43	1-10-137-138-139	15.00	N 89° 58' 30" W	0.84	0.84
44	1-10-140-141-142	15.00	N 89° 58' 30" W	0.84	0.84
45	1-10-143-144-145	15.00	N 89° 58' 30" W	0.84	0.84
46	1-10-146-147-148	15.00	N 89° 58' 30" W	0.84	0.84
47	1-10-149-150-151	15.00	N 89° 58' 30" W	0.84	0.84
48	1-10-152-153-154	15.00	N 89° 58' 30" W	0.84	0.84
49	1-10-155-156-157	15.00	N 89° 58' 30" W	0.84	0.84
50	1-10-158-159-160	15.00	N 89° 58' 30" W	0.84	0.84
51	1-10-161-162-163	15.00	N 89° 58' 30" W	0.84	0.84
52	1-10-164-165-166	15.00	N 89° 58' 30" W	0.84	0.84
53	1-10-167-168-169	15.00	N 89° 58' 30" W	0.84	0.84
54	1-10-170-171-172	15.00	N 89° 58' 30" W	0.84	0.84
55	1-10-173-174-175	15.00	N 89° 58' 30" W	0.84	0.84
56	1-10-176-177-178	15.00	N 89° 58' 30" W	0.84	0.84
57	1-10-179-180-181	15.00	N 89° 58' 30" W	0.84	0.84
58	1-10-182-183-184	15.00	N 89° 58' 30" W	0.84	0.84
59	1-10-185-186-187	15.00	N 89° 58' 30" W	0.84	0.84
60	1-10-188-189-190	15.00	N 89° 58' 30" W	0.84	0.84
61	1-10-191-192-193	15.00	N 89° 58' 30" W	0.84	0.84
62	1-10-194-195-196	15.00	N 89° 58' 30" W	0.84	0.84
63	1-10-197-198-199	15.00	N 89° 58' 30" W	0.84	0.84
64	1-10-200-201-202	15.00	N 89° 58' 30" W	0.84	0.84

FINAL PLAN OF  
 MARICOPA HEADINGS  
 PARCEL 13  
 SHEET 5 OF 5 NOVEMBER 2003  
 James H. Anderson  
 Professional Engineer  
 No. 135870  
 State of Michigan

FINN RAY OF  
 MARICOPA HEADINGS  
 PARCEL 13  
 SHEET 5 OF 5 NOVEMBER 2003  
 FINN RAY OF  
 ENGINEERING CORPORATION  
 10000 W. GRAND AVENUE  
 SUITE 100  
 GRAND RAPIDS, MICHIGAN 49508

STATE OF MICHIGAN  
 JAMES H. ANDERSON  
 PROFESSIONAL ENGINEER  
 NO. 135870  
 STATE OF MICHIGAN  
 FINN RAY OF  
 ENGINEERING CORPORATION  
 10000 W. GRAND AVENUE  
 SUITE 100  
 GRAND RAPIDS, MICHIGAN 49508

ED-110-5