

RESOLUTION NO. 07-14

A RESOLUTION OF THE MAYOR AND CITY COUNCIL OF THE CITY OF MARICOPA, ARIZONA, ACCEPTING PUBLIC IMPROVEMENTS AND MAINTENANCE RESPONSIBILITY FOR ALL STREETS WITHIN PARCELS 15 AND 16 OF THE GLENNWILDE SUBDIVISION, INTO THE CITY STREET/ROAD MAINTENANCE SYSTEM. THE STREETS INCLUDE ALL LOCAL INTERNAL STREETS WITHIN PARCELS 15 AND 16 OF THE GLENNWILDE SUBDIVISION.

WHEREAS, the City has received a request from the owner/developer to accept public improvements and maintenance responsibility for the local internal streets within Parcels 15 and 16 of the Glennwilde Subdivision, into the City street/road maintenance system. The streets include all local internal streets within Parcels 15 and 16 of the Glennwilde Subdivision.

WHEREAS, it appears that the public improvements in question have been properly dedicated for public use; and

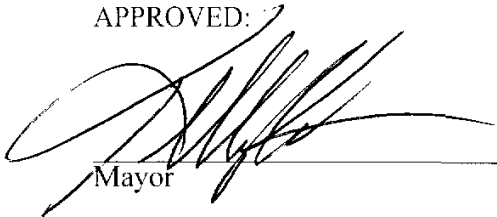
WHEREAS, the Maricopa Public Works Department has inspected the public improvements and has notified the Maricopa City Council that the public improvements have been installed to the satisfaction of the Maricopa Public Works Department; and

WHEREAS, it appears to the Maricopa City Council that the current owner has paid to the City the appropriate Subdivision Street Maintenance Fee, as established by Resolution 04-16, and any other applicable fees relating to the property;

NOW, THEREFORE, BE IT RESOLVED that the Maricopa City Council hereby accepts all local internal streets within Parcels 15 and 16 of the Glennwilde Subdivision, as indicated on the maps attached as Exhibit "A" hereto, into the City road system for purposes of public use, ownership and future maintenance. The streets include all local internal streets within Parcels 15 and 16 of the Glennwilde Subdivision. This Resolution shall be in full force and effect from and after its passage.

PASSED AND ADOPTED BY THE Mayor and Council of the City of Maricopa, Arizona, this 3rd day of April, 2007.

APPROVED:



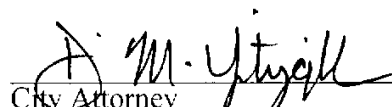
Mayor

ATTEST:



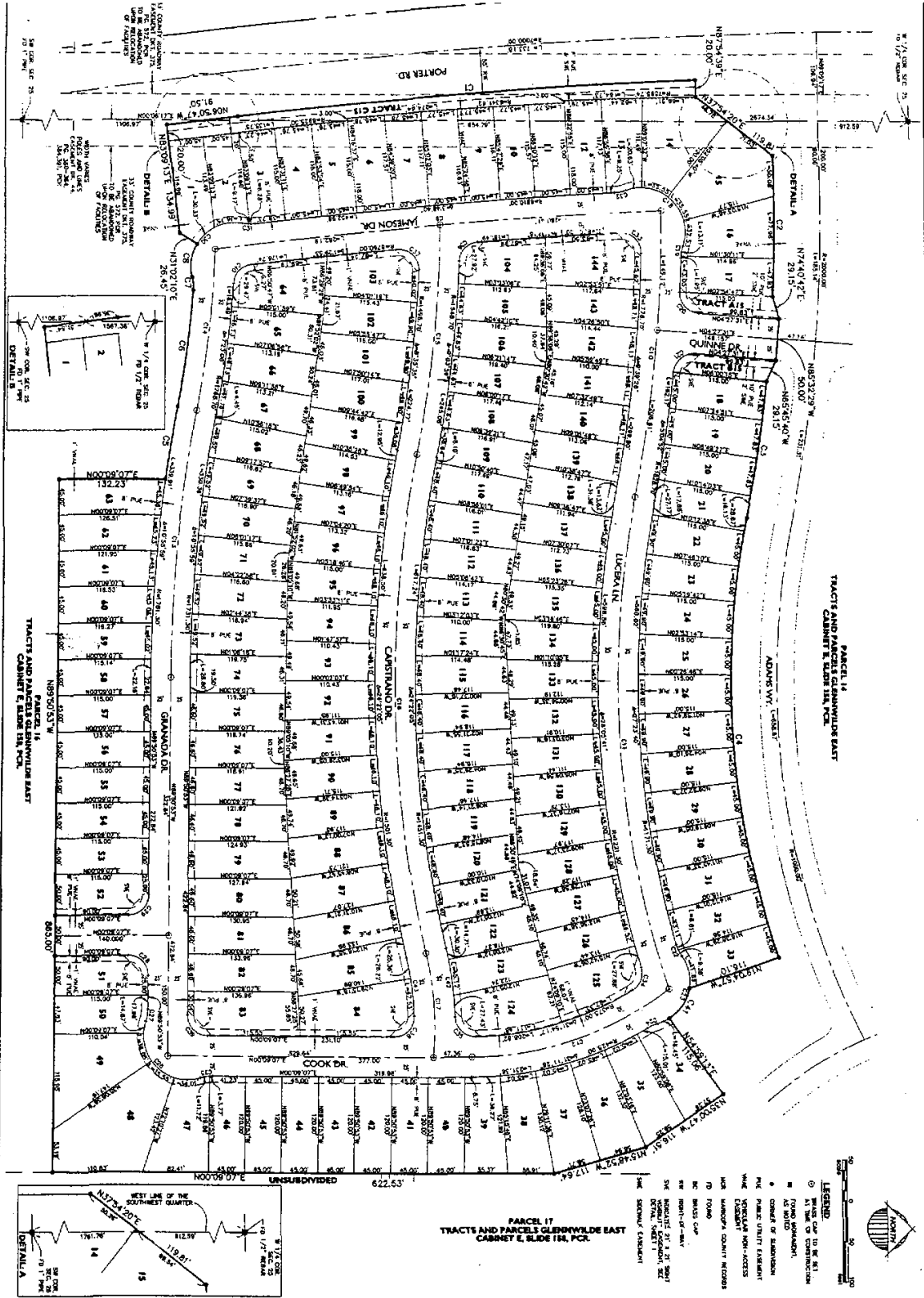
City Clerk

APPROVED AS TO FORM:



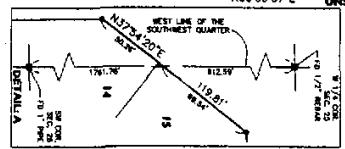
City Attorney

EXHIBIT "A"



PARCEL 14
TRACTS AND PARCELS GLENWILDE EAST
CABNET E, BLDE III, PCC

TRACTS AND PARCELS GLENWILDE EAST
CABNET E, BLDE III, PCC



PARCEL 17
TRACTS AND PARCELS GLENWILDE EAST
CABNET E, BLDE III, PCC

- LEGEND**
- REVISION TO BE NOTED
 - ROAD WIDENING
 - AS NOTED
 - CHANGE OF SUBDIVISION
 - PUBLIC UTILITY EXISTENT
 - PUBLIC UTILITY NON-ACCESS
 - PUBLIC UTILITY EXISTENT
 - PUBLIC UTILITY NON-ACCESS
 - MAINTENANCE COUNTY RECORDS
 - ROAD
 - BRASS CURB
 - FRONT-OF-YARD
 - SIDEWALK EXISTENT, SET
 - SIDEWALK EXISTENT
 - SIDEWALK EXISTENT

			<p>Elm Tree at Glenwilde - Parcel 15</p> <p>Multiple Address</p> <p>FINAL PLAT</p>		<p>Eps group, Inc.</p> <p>Engineers, Planners & Surveyors</p> <p>1111 E. County Road No. 21, P.O. Box 9211 Elmwood, Ohio 44121 Tel: 440.924.2222 Fax: 440.924.2225</p>
--	--	--	--	--	---

