

RESOLUTION NO. 08-27

A RESOLUTION OF THE MAYOR AND CITY COUNCIL OF THE CITY OF MARICOPA, ARIZONA, ACCEPTING PUBLIC IMPROVEMENTS AND MAINTENANCE RESPONSIBILITY FOR ALL STREETS WITHIN THE VILLAGES AT RANCHO EL DORADO, PARCEL 13A, INTO THE CITY STREET/ROAD MAINTENANCE SYSTEM. THE STREETS INCLUDE ALL LOCAL INTERNAL STREETS WITHIN PARCEL 13A OF THE VILLAGES AT RANCHO EL DORADO SUBDIVISION.

WHEREAS, the City has received a request from the owner/developer to accept public improvements and maintenance responsibility for the local internal streets within Parcel 13A of The Villages at Rancho el Dorado Subdivision, into the City street/road maintenance system. The streets include all local internal streets within Parcel 13A of The Villages at Rancho El Dorado Subdivision.

WHEREAS, it appears that the public improvements in question have been properly dedicated for public use; and

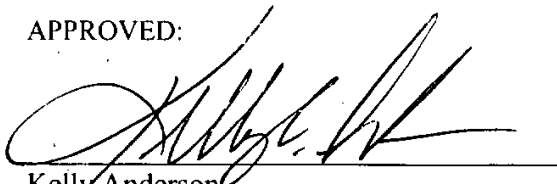
WHEREAS, the Maricopa Public Works Department has inspected the public improvements and has notified the Maricopa City Council that the public improvements have been installed to the satisfaction of the Maricopa Public Works Department; and

WHEREAS, it appears to the Maricopa City Council that the current owner has paid to the City the appropriate Subdivision Street Maintenance Fee, as established by Resolution 04-16, and any other applicable fees relating to the property;

NOW, THEREFORE, BE IT RESOLVED that the Maricopa City Council hereby accepts all local internal streets within Parcel 3 of the Rancho Mirage Estates Subdivision, as indicated on the maps attached as Exhibit "A" hereto, into the City road system for purposes of public use, ownership and future maintenance. The streets include all local internal streets within Parcel 13A of The Villages at Rancho El Dorado Subdivision.

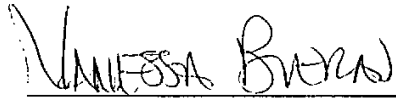
PASSED AND ADOPTED BY THE Mayor and Council of the City of Maricopa, Arizona, this 21st day of May, 2008.

APPROVED:



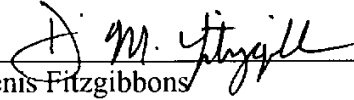
Kelly Anderson
Mayor

ATTEST:



Vanessa Bueras, CMC
City Clerk

APPROVED AS TO FORM:



Denis Fitzgibbons
City Attorney

EXHIBIT A

SEC. 22 T. 4S R. 3E

AREA CODE
0000

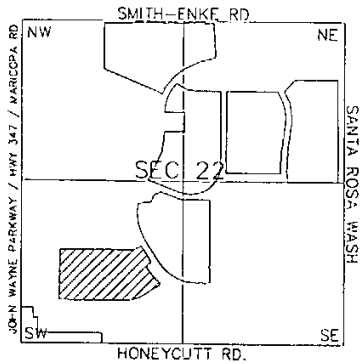
SPECIAL DISTRICTS
00000
00000

THIS MAP IS FOR TAX PURPOSES ONLY.
THIS OFFICE WILL NOT ASSUME LIABILITY FOR REPRESENTATION, MEASUREMENTS OR ACREAGE.

THE ORIGINAL PLAT OF THIS SUBDIVISION IS ON FILE WITH THE PINAL COUNTY RECORDERS OFFICE. FOR COMPLETE INFORMATION OF PLAT AND C&M'S CALL (520) 868-7100.

CANCELED PARCELS
510-58-008A, 009B, 007, 008, 009A, 009B
010A, 010B, 011

VICINITY MAP



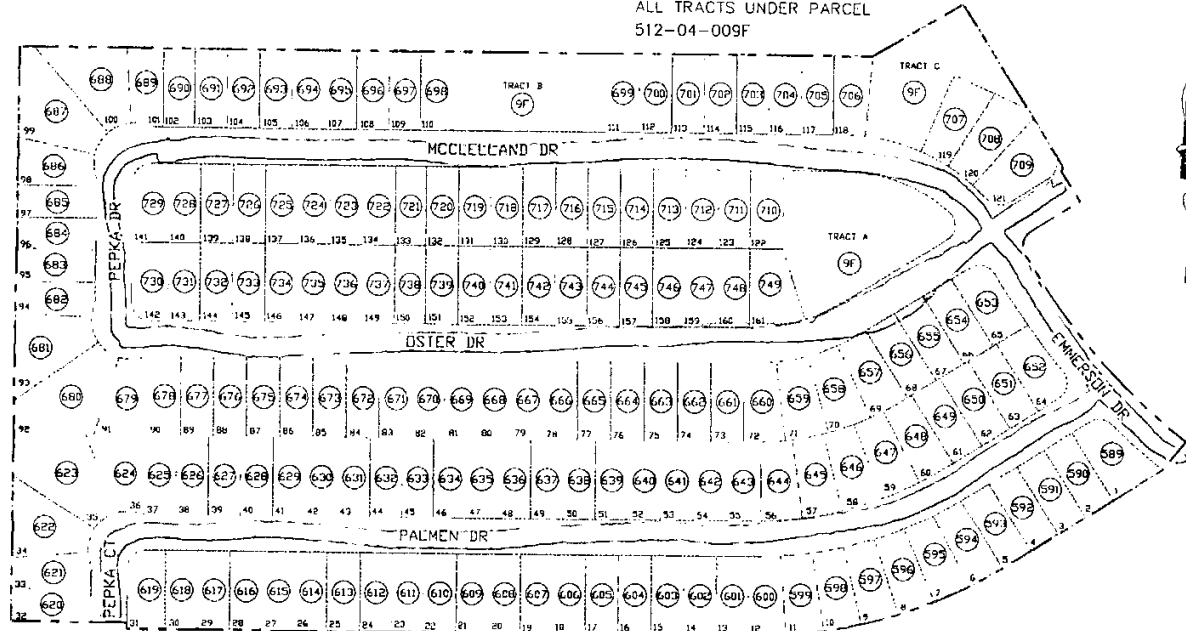
SEE MAP 512-04_1

PARCEL 13A
OF THE VILLAGES
AT RANCHO ELDORADO
CAB U - SLD 149

512-04_6

SEE MAP 512-04_1

ALL TRACTS UNDER PARCEL
512-04-009F



SEE MAP 512-04_1

SEE MAP 512-04_1

SCALE: 1" = 150'
7-5-2005

PINAL COUNTY ASSESSORS MAP