

**RESOLUTION NO. 20-33**

**A RESOLUTION OF THE MAYOR AND CITY COUNCIL OF THE CITY OF MARICOPA, ARIZONA, APPROVING AND ADOPTING A MODIFIED REDEVELOPMENT DISTRICT AREA PLAN BOUNDARY MAP AND AUTHORIZING STAFF TO AMEND THE REDEVELOPMENT DISTRICT AREA PLAN AS NECESSARY TO REFLECT THE NEW BOUNDARIES.**

**WHEREAS**, on September 2, 2008, the City Council approved Resolution No. 08-48 declaring declared 3.1 square miles of land within the City as a Redevelopment District pursuant to A.R.S. §36-1473; and

**WHEREAS**, on July 7, 2009, the City Council approved Resolution No. 09-24 adopting the Downtown Redevelopment Plan which regulated development within the Redevelopment District; and


**WHEREAS**, after review, staff has determined that the current boundary includes more than 1000 acres of undeveloped and vacant land, which they recommend be removed from the Redevelopment District and the development requirements related thereto; and

**WHEREAS**, the reduction of the Redevelopment District will necessitate an update of the Redevelopment District Area Plan including, but not limited to, revisions of the Drainage Way Map, Zoning Map, Land Use Map, and the General Plan Future Land Use Map.

**NOW THEREFORE, BE IT RESOLVED** by the Mayor and City Council of the City of Maricopa, Arizona, approving and adopting a modified Redevelopment District Area Plan Boundary Map as set forth in Exhibit "A" hereto and authorizing City staff to amend the Redevelopment District Area Plan as necessary to reflect the new boundaries.

**PASSED AND ADOPTED** by the Mayor and Council of the City of Maricopa, Arizona, this 18<sup>th</sup> day of August, 2020.

APPROVED:

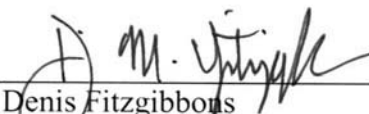
  
Christian Price  
Mayor

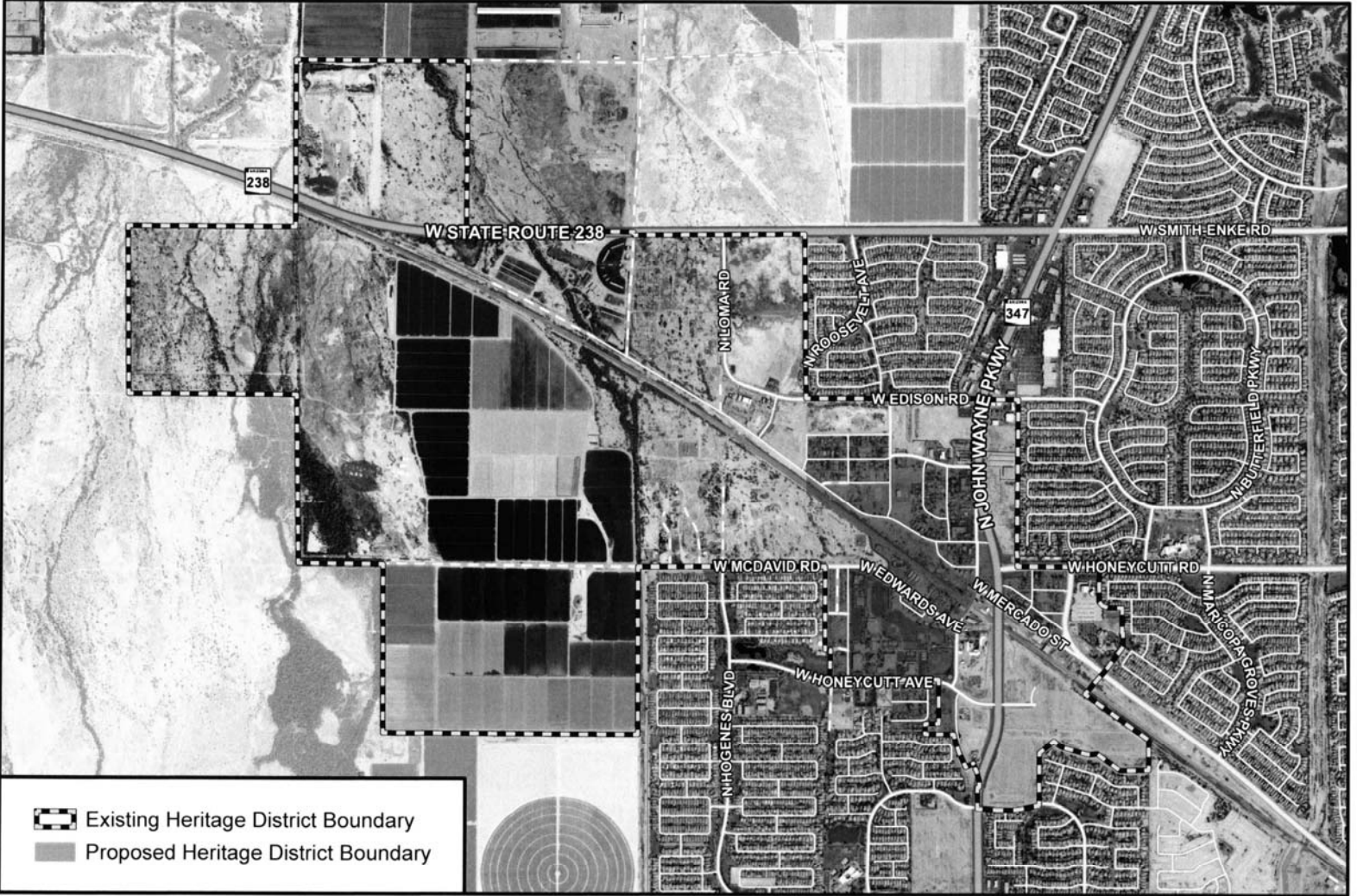


ATTEST:

  
Vanessa Bueras, CMC  
City Clerk

APPROVED AS TO FORM:

  
Denis Fitzgibbons  
City Attorney



Information shown on this map is for general reference and should be verified using recorded documents. It should not be used to replace a site survey.

8/10/2020

11" x 8.5"

H:\Projects\City Manager\2020\Heritage District Committee\heritage\_district\_committee\_aprx

0 1,000 2,000  
Feet  
1 inch = 2,000 Feet